

Product datasheet for PH320834

GTPBP9 (OLA1) (NM_013341) Human Mass Spec Standard

Product data:

Product Type:	Mass Spec Standards
Description:	OLA1 MS Standard C13 and N15-labeled recombinant protein (NP_037473)
Species:	Human
Expression Host:	HEK293
Expression cDNA Clone or AA Sequence:	RC220834
Predicted MW:	44.6 kDa
Protein Sequence:	>RC220834 representing NM_013341 Red =Cloning site Green =Tags(s)

MPPKKGGDGIKPPPIIGRFGTSLKIGIVGLPNVGKSTFFNVLTSQASAENFPFCTIDPNESRVPVPDER
 FDFLCQYHKPASKIPAFLNVVDIAGLVKGAHNGQGLGNAFLSHISACDGIFHLTRAFEDDDITHVEGSVD
 PIRDIEIIHEELQLKDEEMIGPIIDKLEKVAVRGGDKLKPEYDIMCKVKSVIDQKKPVRFYHDWNDKE
 IEVLNKHFLFTSKPMVYLVNLSEKDYIRKKNKWLIIKEWVDKYDPGALVIPFSGALELKLQELSAEERQ
 KYLEANMTQSALPKIIKAGFAALQLEYFFTAGPDEVRAWTIRKGTAPQAAGKIHTDFEKGFIAMVVMKY
 EDFKEEGSENAVKAAGKYRQQGRNYIVEDGDIIFFKFNTPOQPKKK

TRTRPLEQKLISEEDLAANDILDYKDDDDKV

Tag:	C-Myc/DDK
Purity:	> 80% as determined by SDS-PAGE and Coomassie blue staining
Concentration:	>0.05 µg/µL as determined by microplate BCA method
Labeling Method:	Labeled with [U- ¹³ C ₆ , ¹⁵ N ₄]-L-Arginine and [U- ¹³ C ₆ , ¹⁵ N ₂]-L-Lysine
Buffer:	25 mM Tris-HCl, 100 mM glycine, pH 7.3
Storage:	Store at -80°C. Avoid repeated freeze-thaw cycles.
Stability:	Stable for 3 months from receipt of products under proper storage and handling conditions.
RefSeq:	<u>NP_037473</u>
RefSeq Size:	4356
RefSeq ORF:	1188
Synonyms:	DOC45; GBP45; GTBP9; GTPBP9; PTD004
Locus ID:	29789

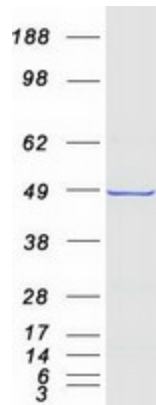

[View online »](#)

UniProt ID: Q9NTK5

Cytogenetics: 2q31.1

Summary: This gene encodes a member of the GTPase protein family. The encoded protein interacts with breast cancer-associated gene 1 (BRCA1) and BRCA1-associated RING domain protein (BARD1), and is involved in centrosome regulation. Overexpression of this gene has been observed in multiple types of cancer and may be associated with poor survival. Pseudogenes of this gene have been defined on chromosomes 17 and 22. [provided by RefSeq, Jun 2016]

Product images:



Coomassie blue staining of purified OLA1 protein (Cat# [TP320834]). The protein was produced from HEK293T cells transfected with OLA1 cDNA clone (Cat# [RC220834]) using MegaTran 2.0 (Cat# [TT210002]).