

## Product datasheet for PH320804

### CHI3L2 (NM\_004000) Human Mass Spec Standard

#### Product data:

Product Type:	Mass Spec Standards
Description:	CHI3L2 MS Standard C13 and N15-labeled recombinant protein (NP_003991)
Species:	Human
Expression Host:	HEK293
Expression cDNA Clone or AA Sequence:	RC220804
Predicted MW:	43.5 kDa
Protein Sequence:	>RC220804 protein sequence Red=Cloning site Green=Tags(s)  MGATTMDQKSLWAGVVVLLLLQGG SAYKLV CYFTNWSQDRQEPGKFTPENIDPFLCSHLIYSFASIENNK VI IKDKSEVMLYQTINSLKTKNPKLKILLSIGGYLFGSKGFHPMVDSSRLEFINSIILFLRNHNF DGL DVSWIYPDQKENTHFTVLIHELAEAFQKDFTKSTKERLLLTVGV SAGRQ MIDNSYQVEKLAKDLDFINLL SDFDFHGSWEKPLITGHNSPLSKGWQDRGPSSYYNVEYAVGYWIHKMPSEKVV MGIPTYGHSFTLASAET TVGAPASGPGAAGPITESGFLAYYEICQFLKGAKITRLQDQVYPYAVKGNQWVG YDDVKS METKVQFLK NLNLGGAMIWSIDMDDFTGKSCNQGPYPLVQAVKRSLGSL  TRTRPLEQKLI SEEDLAANDILDYKDDDDKV
Tag:	C-Myc/DDK
Purity:	> 80% as determined by SDS-PAGE and Coomassie blue staining
Concentration:	>0.05 µg/µL as determined by microplate BCA method
Labeling Method:	Labeled with [U- <sup>13</sup> C <sub>6</sub> , <sup>15</sup> N <sub>4</sub> ]-L-Arginine and [U- <sup>13</sup> C <sub>6</sub> , <sup>15</sup> N <sub>2</sub> ]-L-Lysine
Buffer:	25 mM Tris-HCl, 100 mM glycine, pH 7.3
Storage:	Store at -80°C. Avoid repeated freeze-thaw cycles.
Stability:	Stable for 3 months from receipt of products under proper storage and handling conditions.
RefSeq:	<a href="#">NP_003991</a>
RefSeq Size:	1486
RefSeq ORF:	1170
Synonyms:	CHIL2; YKL-39; YKL39
Locus ID:	1117



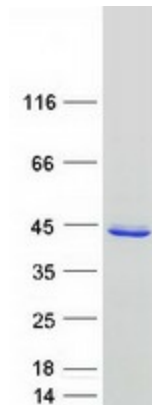
[View online »](#)

UniProt ID: [Q15782](#)

Cytogenetics: 1p13.2

Summary: The protein encoded by this gene is similar to bacterial chitinases but lacks chitinase activity. The encoded protein is secreted and is involved in cartilage biogenesis. Several transcript variants encoding different isoforms have been found for this gene. [provided by RefSeq, Apr 2012]

### Product images:



Coomassie blue staining of purified CHI3L2 protein (Cat# [TP320804]). The protein was produced from HEK293T cells transfected with CHI3L2 cDNA clone (Cat# [RC220804]) using MegaTran 2.0 (Cat# [TT210002]).