

## Product datasheet for PH320783

### PGEA1 (CBY1) (NM\_015373) Human Mass Spec Standard

#### Product data:

Product Type:	Mass Spec Standards
Description:	CBY1 MS Standard C13 and N15-labeled recombinant protein (NP_056188)
Species:	Human
Expression Host:	HEK293
Expression cDNA Clone or AA Sequence:	RC220783
Predicted MW:	14.3 kDa
Protein Sequence:	>RC220783 representing NM_015373 <b>Red</b> =Cloning site <b>Green</b> =Tags(s)  MPFFGNTFSPKKTPPRKSASLSNLHSLDRSTREVELGLEYGSPMTNLAGQSLKFENGQWIAETGVSGGVD RREVQRLRRRNQLEEEENLLRLKVDILLDMLSESTAESHLMKELDELRI SRKRK  <b>SGP</b> TRTRRLE <b>QKL</b> I <b>SEEDLA</b> AND <b>ILDYKDDDDK</b> V
Tag:	C-Myc/DDK
Purity:	> 80% as determined by SDS-PAGE and Coomassie blue staining
Concentration:	>0.05 µg/µL as determined by microplate BCA method
Labeling Method:	Labeled with [U- 13C6, 15N4]-L-Arginine and [U- 13C6, 15N2]-L-Lysine
Buffer:	25 mM Tris-HCl, 100 mM glycine, pH 7.3
Storage:	Store at -80°C. Avoid repeated freeze-thaw cycles.
Stability:	Stable for 3 months from receipt of products under proper storage and handling conditions.
RefSeq:	<a href="#">NP_056188</a>
RefSeq Size:	1147
RefSeq ORF:	378
Synonyms:	arb1; C22orf2; CBY; Chibby1; HS508I15A; PGEA1; PIGEA-14; PIGEA14
Locus ID:	25776
UniProt ID:	<a href="#">Q9Y3M2</a> , <a href="#">A0A024R1L9</a>
Cytogenetics:	22q13.1



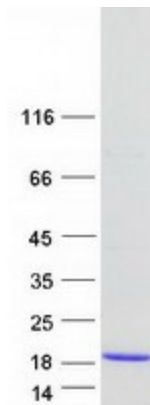
[View online »](#)

**Summary:**

Beta-catenin is a transcriptional activator and oncoprotein involved in the development of several cancers. The protein encoded by this gene interacts directly with the C-terminal region of beta-catenin, inhibiting oncogenic beta-catenin-mediated transcriptional activation by competing with transcription factors for binding to beta-catenin. Two transcript variants encoding different isoforms have been found for this gene. [provided by RefSeq, Jul 2008]

**Protein Families:**

Transcription Factors

**Product images:**

Coomassie blue staining of purified CBY1 protein (Cat# [TP320783]). The protein was produced from HEK293T cells transfected with CBY1 cDNA clone (Cat# [RC220783]) using MegaTran 2.0 (Cat# [TT210002]).