

Product datasheet for PH320758

GIMAP8 (NM_175571) Human Mass Spec Standard

Product data:

Product Type:	Mass Spec Standards
Description:	GIMAP8 MS Standard C13 and N15-labeled recombinant protein (NP_783161)
Species:	Human
Expression Host:	HEK293
Expression cDNA Clone or AA Sequence:	RC220758
Predicted MW:	74.9 kDa
Protein Sequence:	>RC220758 protein sequence Red=Cloning site Green=Tags(s)

MSEQSCQMSELRLLLLGKCRSGKSATGNAILGKHVFKSKFSDQTVIKMCQRESWVLRERKVVVIDTPDLF
SSIACAEDKQRNIQHCLLHALLLVIAIGHFTREDEETAKGIQQVFGEARRHIIIVFTRKDDL
DDLLQDFIEKNKPLKQLVQDYEGRYCIFNNKTSKDEQITQVLELLRKVESLVNTNGGPYHVNFKTEGSR
FQDCVNEAASQEGDKPQGPRERQLQSTGPEQNPSTSELTVLLVGKRGAGKSAAGNSILGRQAFQTGFSEQ
SVTQSFLSESRSWRKKKVSIIIDAPDISSLKNIDSEVRKHICTGPHAFLLVTPLGFYTKNDEAVLSTIQNN
FGEKFFEYMIILLTRKEDLDQDLDTFLRNSNKALYGLIQKCKNRYSAFNYRATGEEEQRADELLEKIE
SMVHQNGNKHCVFREKETLNIVLVGRSGTGKSATGNSILGSLVFTSRLRAQPVTKTSQSGRRTWDGQEVV
VVDTPSFNQMLDVEKDP SRL EEEVKRCLSCCEKGD TFFVLVFLGRFTEEDKTAVAKLEAIFGADFTKYA
IMLFTRKEDLGAGNLEDFMKNSDNKALRRIFKKCGRRVCAFNNKETGQAQETQVKALLTKVNDLRKESGW
SGYPHTQENVSKLIKNVQEMSQAELLLKNLIGILQ

TRTRPLEQKLISEEDLAANDILDYKDDDDKV

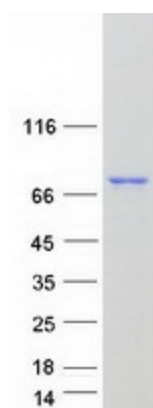
Tag:	C-Myc/DDK
Purity:	> 80% as determined by SDS-PAGE and Coomassie blue staining
Concentration:	>0.05 µg/µL as determined by microplate BCA method
Labeling Method:	Labeled with [U- 13C6, 15N4]-L-Arginine and [U- 13C6, 15N2]-L-Lysine
Buffer:	25 mM Tris-HCl, 100 mM glycine, pH 7.3
Storage:	Store at -80°C. Avoid repeated freeze-thaw cycles.
Stability:	Stable for 3 months from receipt of products under proper storage and handling conditions.
RefSeq:	NP_783161
RefSeq Size:	3952



[View online »](#)

RefSeq ORF:	1995
Synonyms:	IAN-9; IAN6; IAN9; IANT
Locus ID:	155038
UniProt ID:	Q8ND71
Cytogenetics:	7q36.1
Summary:	This gene encodes a protein belonging to the GTP-binding superfamily and to the immuno-associated nucleotide (IAN) subfamily of nucleotide-binding proteins. In humans, the IAN subfamily genes are located in a cluster at 7q36.1. [provided by RefSeq, Jul 2008]

Product images:



Coomassie blue staining of purified GIMAP8 protein (Cat# [TP320758]). The protein was produced from HEK293T cells transfected with GIMAP8 cDNA clone (Cat# [RC220758]) using MegaTran 2.0 (Cat# [TT210002]).