

Product datasheet for PH320731

E Cadherin (CDH1) (NM_004360) Human Mass Spec Standard

Product data:

Product Type:	Mass Spec Standards
Description:	CDH1 MS Standard C13 and N15-labeled recombinant protein (NP_004351)
Species:	Human
Expression Host:	HEK293
Expression cDNA Clone or AA Sequence:	RC220731
Predicted MW:	97.46 kDa
Protein Sequence:	>RC220731 representing NM_004360 Red=Cloning site Green=Tags(s)

MGPWSRSLALLLLQVSSWLCQEPEPCHPGFDAESYTFVPRRHLEGRVLRVNFEDCTGRQRTAYFS
LDTRFKVGTGDIIVKRPRLRFHNPQIHFLVYAWDSTYRKFKSTKVTNLNTVGHHRPPPHQASVSGIAELL
TFPNSSPGLRRQKRDWIPPIISCPENEKGFPPKNLVQIKSNKDKEGKVFYSITGGADTPPVGVFIERE
TGWLKVTPEPLDRERIATYTLFSAVSSNGNAVEDPMEILITVTDQNDNKPEFTQEVFKGSVMGALPGTS
VMEVTATDADDDVNTYNAAIAYTILSQDPELPDKNMTINRNTGVISVVTGLDRESFPTYTLVVQAADL
QGEGLSTTATAVITVTDNDNPPIFNPTTYKGQVPENEANVVITLKVTDADAPNTPAWEAVYTILNDDG
GQFVVTNPNVNDGILKTAKGLDFEAKQQYILHVAVTNVVPFEVSLTTSTATVTVDVLDVNEAPIFVPPE
KRVEVSEDFGVGQEITSYTAQEPDTFMEQKITYRIWRDTANWLEINPDTGAISTRAELDREDFEHVKNST
YTALIIATDNGSPVATGTGTLILLSDVNDNAIPEPRTIFFCERNPKPQVINIIDADLPNTSPFTAEL
THGASANWTIQYNDPTQESIILPKMALEVGDYKINLKLMDNQNKDQVTTLEVSVCDCGAAGVCRKAQP
VEAGLQIPAILGILGGILALLILLLLLFLRRRAVVKEPLLPPEDDTRDNVYYYDEEGGGEEDQDFDLS
QLHRGLDARPEVTRNDVAPTLMSVPRYLPRPANPDEIGNFIDENLKAADTDPTAPPYDSSLVFDYEGSGS
EAASLSSLNSSESDDKQDYDYLNEWGNRFKKLADMYGGGEDD

TRTRPLEQKLISEEDLAANDILDYKDDDDKV

Tag:	C-Myc/DDK
Purity:	> 80% as determined by SDS-PAGE and Coomassie blue staining
Concentration:	>0.05 µg/µL as determined by microplate BCA method
Labeling Method:	Labeled with [U- ¹³ C ₆ , ¹⁵ N ₄]-L-Arginine and [U- ¹³ C ₆ , ¹⁵ N ₂]-L-Lysine
Buffer:	25 mM Tris-HCl, 100 mM glycine, pH 7.3
Storage:	Store at -80°C. Avoid repeated freeze-thaw cycles.
Stability:	Stable for 3 months from receipt of products under proper storage and handling conditions.



[View online »](#)

RefSeq: [NP_004351](#)

RefSeq Size: 4828

RefSeq ORF: 2646

Synonyms: Arc-1; BCDS1; CD324; CDHE; ECAD; LCAM; UVO

Locus ID: 999

UniProt ID: [P12830](#), [A0A0U2ZQU7](#), [B3GN61](#)

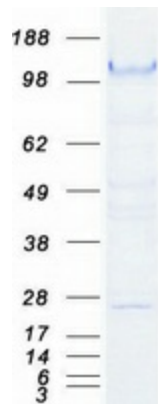
Cytogenetics: 16q22.1

Summary: This gene encodes a classical cadherin of the cadherin superfamily. Alternative splicing results in multiple transcript variants, at least one of which encodes a preproprotein that is proteolytically processed to generate the mature glycoprotein. This calcium-dependent cell-cell adhesion protein is comprised of five extracellular cadherin repeats, a transmembrane region and a highly conserved cytoplasmic tail. Mutations in this gene are correlated with gastric, breast, colorectal, thyroid and ovarian cancer. Loss of function of this gene is thought to contribute to cancer progression by increasing proliferation, invasion, and/or metastasis. The ectodomain of this protein mediates bacterial adhesion to mammalian cells and the cytoplasmic domain is required for internalization. This gene is present in a gene cluster with other members of the cadherin family on chromosome 16. [provided by RefSeq, Nov 2015]

Protein Families: Druggable Genome, ES Cell Differentiation/IPS, Transmembrane

Protein Pathways: Adherens junction, Bladder cancer, Cell adhesion molecules (CAMs), Endometrial cancer, Melanoma, Pathogenic Escherichia coli infection, Pathways in cancer, Thyroid cancer

Product images:



Coomassie blue staining of purified CDH1 protein (Cat# [TP320731]). The protein was produced from HEK293T cells transfected with CDH1 cDNA clone (Cat# [RC220731]) using MegaTran 2.0 (Cat# [TT210002]).