

Product datasheet for PH320701

SNRPB (NM_198216) Human Mass Spec Standard

Product data:

| | |
|---------------------------------------|--|
| Product Type: | Mass Spec Standards |
| Description: | SNRPB MS Standard C13 and N15-labeled recombinant protein (NP_937859) |
| Species: | Human |
| Expression Host: | HEK293 |
| Expression cDNA Clone or AA Sequence: | RC220701 |
| Predicted MW: | 24.4 kDa |
| Protein Sequence: | >RC220701 representing NM_198216 Red=Cloning site Green=Tags(s) MTVGKSSKMLQHIDYRMRCILQDGRIFIGTFKAFDKHMNLI LDCDFR KIKPKNSKQAEREKRVLGLV LLRGENLVSMTVEGPPPKDTGIARVPLAGAAGGPGIGRAAGRGIPAGVPMQAPAGLAGPVRGVGGPSQQ VMPQGRGTVA AAAAAAATASIAGAPTQYPPGRGGPPPMGRGAPPPGMMGPPPMGRPPMGPPMGIPPRG TPMGPPPGMRPPPPGMRGPPPPGMRPPRP TRTRPLEQKLI SEEDLAANDILDYKDDDDKV |
| Tag: | C-Myc/DDK |
| Purity: | > 80% as determined by SDS-PAGE and Coomassie blue staining |
| Concentration: | >0.05 µg/µL as determined by microplate BCA method |
| Labeling Method: | Labeled with [U- ¹³ C ₆ , ¹⁵ N ₄]-L-Arginine and [U- ¹³ C ₆ , ¹⁵ N ₂]-L-Lysine |
| Buffer: | 25 mM Tris-HCl, 100 mM glycine, pH 7.3 |
| Storage: | Store at -80°C. Avoid repeated freeze-thaw cycles. |
| Stability: | Stable for 3 months from receipt of products under proper storage and handling conditions. |
| RefSeq: | NP_937859 |
| RefSeq Size: | 1007 |
| RefSeq ORF: | 720 |
| Synonyms: | CCMS; COD; Sm-B/B'; SmB/B'; SmB/SmB'; snRNP-B; SNRPB1 |
| Locus ID: | 6628 |
| UniProt ID: | P14678 |



[View online »](#)

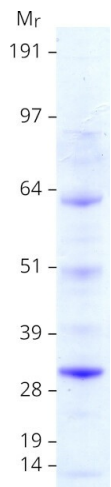
Cytogenetics: 20p13

Summary: The protein encoded by this gene is one of several nuclear proteins that are found in common among U1, U2, U4/U6, and U5 small ribonucleoprotein particles (snRNPs). These snRNPs are involved in pre-mRNA splicing, and the encoded protein may also play a role in pre-mRNA splicing or snRNP structure. Autoantibodies from patients with systemic lupus erythematosus frequently recognize epitopes on the encoded protein. Two transcript variants encoding different isoforms (B and B') have been found for this gene. [provided by RefSeq, Jul 2008]

Protein Families: Stem cell - Pluripotency

Protein Pathways: Spliceosome, Systemic lupus erythematosus

Product images:



Coomassie blue staining of purified SNRPB protein (Cat# [TP320701]). The protein was produced from HEK293T cells transfected with SNRPB cDNA clone (Cat# [RC220701]) using MegaTran 2.0 (Cat# [TT210002]).