

Product datasheet for PH320692

Leucyl cystinyl aminopeptidase (LNPEP) (NM_005575) Human Mass Spec Standard

Product data:

Product Type:	Mass Spec Standards
Description:	LNPEP MS Standard C13 and N15-labeled recombinant protein (NP_005566)
Species:	Human
Expression Host:	HEK293
Expression cDNA Clone or AA Sequence:	RC220692
Predicted MW:	117.2 kDa
Protein Sequence:	>RC220692 representing NM_005575 Red=Cloning site Green=Tags(s)

MEPFTNDRLQLPRNMIENSMFEEEDPVVDLAKEPCLHPLEPDEVEYEPGRSRLVRLGEGHEMEDEEDY
ESSAKLLGMSFMNRSSGLRNSATGYRQSPDGACSVPSARTMVVCAFVIVVAVSVIMVIYLLPRCTFTKEG
CHKKNQSIGLIQPFATNGKLPWAQIRLPTAVVPLRYELSLHPNLTSMFRGSVTISVQALQVTWNIILH
STGHNISRVTFMSAVSSQEKQAEILEYAYHGQIAIVAPEALLAGHNYTLKIEYSANISSYYGFYGSYT
DESNEKKYFAATQFEPLAARSAFPCFDEPAFKATFI I KIIRDEQYTALSNMPKSSVVLDDGLVQDEFSE
SVKMSTYLVAFIVGEMKNLSQDVNGTLVSIYAVPEKIGQVHYALETTVKLLEFFQNYFEIQYPLKKLDLV
AIPDFEAGAMENWGLLTFREETLLYDSNTSSMADRKLVTKIIAHELHQWFGNLVTMKWWNDLWLNEGFA
TFMEYFSLEKIFKELSSYEDFLDARFKTMKKDSLNSHPISSSVQSSEIEEMFDSL SYFKGSSLLMLK
TYLSEDFVQHAVVLYLHNHSYASIQSDDLWDSFNEVTNQTL DVKRMKWTWLQKGFPLVTQKKGKELFI
QQERFFLNMKPEIQPSDTSYLWHIPLSYVTEGRNYSKYQSVSLLDKKSQVNLTEEVLWVKVINNMNGYY
IVHYADDDWEALIHQLKINPYVLSKDNRANLNNIFELAGLGKVPKRAFIDLINYLGNENHTAPITEALF
QTDLIYNLLEKLGMDLASRLVTRVFKLLQNQIQQTWTDEGTPSMRELSALLEFACTHNLGNCSTTAM
KLFDDWMASNGTQSLPTDVMTTVFVKVGA KTKGWSFLLGKYISIGSEAEKNKILEALASSEDVRKLYWLM
KSSLNGDNFR TQKLSFIIRTVGRHFPGHLLAWDFVKENWNKLVQKFP LGSYTIQNI VAGSTYLFSTKTHL
SEVQAFFENQSEATFRLRCVQEAL EVIQLNIQWMEKNL KSLTWL

TRTRPLEQKLI SEEDLAANDILDYKDDDDKV

Tag:	C-Myc/DDK
Purity:	> 80% as determined by SDS-PAGE and Coomassie blue staining
Concentration:	>0.05 µg/µL as determined by microplate BCA method
Labeling Method:	Labeled with [U- ¹³ C ₆ , ¹⁵ N ₄]-L-Arginine and [U- ¹³ C ₆ , ¹⁵ N ₂]-L-Lysine
Buffer:	25 mM Tris-HCl, 100 mM glycine, pH 7.3
Storage:	Store at -80°C. Avoid repeated freeze-thaw cycles.



[View online >](#)

Stability: Stable for 3 months from receipt of products under proper storage and handling conditions.

RefSeq: [NP_005566](#)

RefSeq Size: 4470

RefSeq ORF: 3075

Synonyms: CAP; IRAP; P-LAP; PLAP

Locus ID: 4012

UniProt ID: [Q9UIQ6](#)

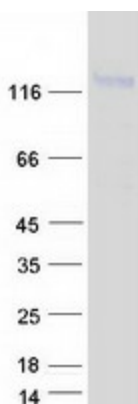
Cytogenetics: 5q15

Summary: This gene encodes a zinc-dependent aminopeptidase that cleaves vasopressin, oxytocin, lys-bradykinin, met-enkephalin, dynorphin A and other peptide hormones. The protein can be secreted in maternal serum, reside in intracellular vesicles with the insulin-responsive glucose transporter GLUT4, or form a type II integral membrane glycoprotein. The protein catalyzes the final step in the conversion of angiotensinogen to angiotensin IV (AT4) and is also a receptor for AT4. Alternative splicing results in multiple transcript variants encoding different isoforms. [provided by RefSeq, Jul 2008]

Protein Families: Druggable Genome, Protease, Secreted Protein, Transmembrane

Protein Pathways: Renin-angiotensin system

Product images:



Coomassie blue staining of purified LNPEP protein (Cat# [TP320692]). The protein was produced from HEK293T cells transfected with LNPEP cDNA clone (Cat# [RC220692]) using MegaTran 2.0 (Cat# [TT210002]).