

Product datasheet for PH320684

Nucleobindin 2 (NUCB2) (NM_005013) Human Mass Spec Standard

Product data:

Product Type:	Mass Spec Standards
Description:	NUCB2 MS Standard C13 and N15-labeled recombinant protein (NP_005004)
Species:	Human
Expression Host:	HEK293
Expression cDNA Clone or AA Sequence:	RC220684
Predicted MW:	50.7 kDa
Protein Sequence:	>RC220684 representing NM_005013 Red=Cloning site Green=Tags(s)

MRWRTILLQYCFLLITCLLTALEAVPIDIDKTKVQNIHPVESAKIEPDTGLYYDEYLKQVIDVLETDKH
FREKLQKADIEEIKSGRLSKELDLVSHHVRTKLDLKRQEVGRLRMLIKAKLDSLQDIGMDHQALLKQFD
HLNHLNPKFESTDLMLIKAATSDLEHYDKTRHEEFKKYEMMKEHERREYLKTLNEEKREEESKFEEM
KKKHENHPKVNHPGSKDQLKEVWEETDGLDPNDFDPKTFKLDHVNDSGFLDEQEALFTKELEKYYDP
KNEEDDMVEMEEERLRMREHVMNEVDTNKDRLVTL EEFLKATEKKEFLPDSWETLDQQQFFTEELKEY
ENIIALQENELKKKADELQKQKEELQRQHDQLEAQKLEYHQVIQQMEQKKLQQGIPPSGPAGELKFEPHI

TRTRPLEQKLI SEEDLAANDILDYKDDDDKV

Tag:	C-Myc/DDK
Purity:	> 80% as determined by SDS-PAGE and Coomassie blue staining
Concentration:	>0.05 µg/µL as determined by microplate BCA method
Labeling Method:	Labeled with [U- ¹³ C ₆ , ¹⁵ N ₄]-L-Arginine and [U- ¹³ C ₆ , ¹⁵ N ₂]-L-Lysine
Buffer:	25 mM Tris-HCl, 100 mM glycine, pH 7.3
Storage:	Store at -80°C. Avoid repeated freeze-thaw cycles.
Stability:	Stable for 3 months from receipt of products under proper storage and handling conditions.
RefSeq:	<u>NP_005004</u>
RefSeq Size:	1612
RefSeq ORF:	1260
Synonyms:	HEL-S-109; NEFA
Locus ID:	4925



[View online »](#)

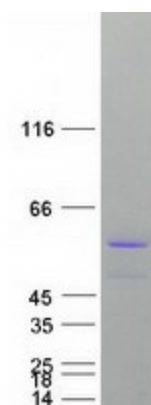
UniProt ID: [P80303](#)

Cytogenetics: 11p15.1

Summary: This gene encodes a protein with a suggested role in calcium level maintenance, eating regulation in the hypothalamus, and release of tumor necrosis factor from vascular endothelial cells. This protein binds calcium and has EF-folding domains. [provided by RefSeq, Oct 2011]

Protein Families: Secreted Protein, Transmembrane

Product images:



Coomassie blue staining of purified NUCB2 protein (Cat# [TP320684]). The protein was produced from HEK293T cells transfected with NUCB2 cDNA clone (Cat# [RC220684]) using MegaTran 2.0 (Cat# [TT210002]).