

Product datasheet for PH320672

INPP5F (OCRL) (NM_000276) Human Mass Spec Standard

Product data:

Product Type:	Mass Spec Standards
Description:	OCRL MS Standard C13 and N15-labeled recombinant protein (NP_000267)
Species:	Human
Expression Host:	HEK293
Expression cDNA Clone or AA Sequence:	RC220672
Predicted MW:	104 kDa
Protein Sequence:	>RC220672 representing NM_000276 Red=Cloning site Green=Tags(s)

MEPPLPVGAQPLATVEGEMKGPLREPCALTLAQRNGQYELIIQLHEKEQHVQDIIPINSHFRCVQEAEETLLIDIASNSGCKIRVQGDWIRERRFEIPDEEHCLKFLSAVLAQAQSQLLVPEQKSSSWYQKLDTKDKPSVFSGLLGFEDNFSSMNLDDKINSQNPQTGIHREPPPPFVSNKMLPREKEASNKEQPKVTNTMRKLFVPNTQSGQREGLIKHILAKREKEYVNIQTRFFVGTWNVNGQSPDSGLEPWLNCDPNPPDIYICIGFQELDLSTEAFYFESVKEQEWMAVERGLHSAKAKYKQVQLVRLVGMMLLIFARKDQCRYIRDIATETVGTGIMGMKMGNGGVAVRVFVHNTTFCIVNSHLAAHVEDFERRNQDYKDICARMSFVVPNQTLPLQNLIMKHEVVIWLGDLNYRLCMPDANEVKSLLINKKDLQRLKFDQLNIQRTQKAFVDFNEGEIKFIPTYKYDSKTRDWDSSGKCRVPAWCDRILWRGTNVNQLNYSRSHMELKTS DHKPVSA LFHIGVKVVDERRYRKFV FSDSVRIMDRMENDFLPSLELSRREFVFNVKFRQLQKEKQFISNNGQVPCFHSFIPKLNDSQYCKPWLRAEPFEGYLEPNETVDI SLDVVYSKDSVTILNSGEDKIEDILVLHLDRGKDYFLTISGNYLPSCFGTSLEALCRMKRP IREVPVTKLIDLEEDSFLEKEKSLQMVPLDEGASERPLQVPKEIWLVDHLFKYACHQEDLFTQPGMQEELQQIIDCLDTSIPETIPGSNHSVAEALLIFLEALPEPVICYELYQRCLDSAYDPRICRQVISQLPRCHRNVFRYLM AFLRELLKFSEYNSVNANMIATLFTSLLLRPPPNLMARQTPSDRQRAIQFLLGFLLGSEED

TRTRPLEQKLI SEEDLAANDILDYKDDDDKV

Tag:	C-Myc/DDK
Purity:	> 80% as determined by SDS-PAGE and Coomassie blue staining
Concentration:	>0.05 µg/µL as determined by microplate BCA method
Labeling Method:	Labeled with [U- ¹³ C ₆ , ¹⁵ N ₄]-L-Arginine and [U- ¹³ C ₆ , ¹⁵ N ₂]-L-Lysine
Buffer:	25 mM Tris-HCl, 100 mM glycine, pH 7.3
Storage:	Store at -80°C. Avoid repeated freeze-thaw cycles.
Stability:	Stable for 3 months from receipt of products under proper storage and handling conditions.



[View online »](#)

RefSeq: [NP_000267](#)

RefSeq Size: 5165

RefSeq ORF: 2703

Synonyms: Dent-2; DENT2; INPP5F; LOCR; NPHL2; OCRL-1; OCRL1

Locus ID: 4952

UniProt ID: [Q01968](#)

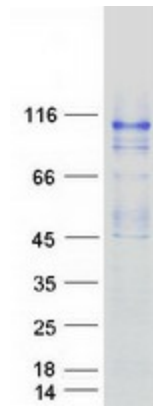
Cytogenetics: Xq26.1

Summary: This gene encodes an inositol polyphosphate 5-phosphatase. This protein is involved in regulating membrane trafficking and is located in numerous subcellular locations including the trans-Golgi network, clathrin-coated vesicles and, endosomes and the plasma membrane. This protein may also play a role in primary cilium formation. Mutations in this gene cause oculocerebrorenal syndrome of Lowe and also Dent disease. Alternate splicing results in multiple transcript variants. [provided by RefSeq, Jan 2016]

Protein Families: Druggable Genome

Protein Pathways: Inositol phosphate metabolism, Metabolic pathways, Phosphatidylinositol signaling system

Product images:



Coomassie blue staining of purified OCRL protein (Cat# [TP320672]). The protein was produced from HEK293T cells transfected with OCRL cDNA clone (Cat# [RC220672]) using MegaTran 2.0 (Cat# [TT210002]).