

Product datasheet for PH320641

NFE4 (NM_001085386) Human Mass Spec Standard

Product data:

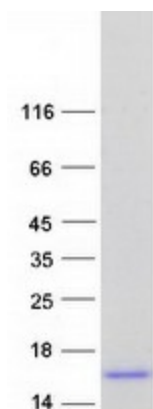
Product Type:	Mass Spec Standards
Description:	NFE4 MS Standard C13 and N15-labeled recombinant protein (NP_001078855)
Species:	Human
Expression Host:	HEK293
Expression cDNA Clone or AA Sequence:	RC220641
Predicted MW:	20.33 kDa
Protein Sequence:	>RC220641 representing NM_001085386 Red=Cloning site Green=Tags(s) LDPVPRRSAAAIALPRVVCWHTLKSLNGYKNLSSGAETREGLRSSSPVDLPLRPRKQATAAGQRKLLSLQ LLLCACTSVTDLTYWGPAGHGATAPHRLLAIHLHLPASSAAMKATGPHNAQTQVNPGRGHAPSAEDPTG SWTVSGPKCDHPHPFLSQSNPPTRISSALPLKTDSALEQTPQQLPSLHLSQG TRTRPLEQKLISEEDLAANDILDYKDDDDKV
Tag:	C-Myc/DDK
Purity:	> 80% as determined by SDS-PAGE and Coomassie blue staining
Concentration:	>0.05 µg/µL as determined by microplate BCA method
Labeling Method:	Labeled with [U- 13C6, 15N4]-L-Arginine and [U- 13C6, 15N2]-L-Lysine
Buffer:	25 mM Tris-HCl, 100 mM glycine, pH 7.3
Storage:	Store at -80°C. Avoid repeated freeze-thaw cycles.
Stability:	Stable for 3 months from receipt of products under proper storage and handling conditions.
RefSeq:	<u>NP_001078855</u>
RefSeq Size:	967
RefSeq ORF:	576
Synonyms:	NF-E4
Locus ID:	58160
Cytogenetics:	7q22.1



[View online »](#)

Summary:

The erythroid-specific protein encoded by this gene, and the ubiquitous transcription factor CP2, form the stage selector protein (SSP) complex, which is involved in preferential expression of the gamma-globin genes in fetal erythroid cells. Alternate use of an in-frame upstream non-AUG (CUG) translation initiation codon, and a downstream AUG codon, results in two isoforms. While the long isoform (22 kDa) acts as an activator, the short isoform (14 kDa) has been shown to repress gamma-globin gene expression. This gene is located in an intron of the FBXL13 gene on the opposite strand. [provided by RefSeq, Jul 2008]

Product images:

Coomassie blue staining of purified NFE4 protein (Cat# [TP320641]). The protein was produced from HEK293T cells transfected with NFE4 cDNA clone (Cat# [RC220641]) using MegaTran 2.0 (Cat# [TT210002]).