

Product datasheet for PH320633

CDCP1 (NM_022842) Human Mass Spec Standard

Product data:

Product Type:	Mass Spec Standards
Description:	CDCP1 MS Standard C13 and N15-labeled recombinant protein (NP_073753)
Species:	Human
Expression Host:	HEK293
Expression cDNA Clone or AA Sequence:	RC220633
Predicted MW:	92.8 kDa
Protein Sequence:	>RC220633 representing NM_022842 Red=Cloning site Green=Tags(s)

MAGLNCGVSIALLGVLLLGAARLPRGAEAFEIALPRESNITVLIKLGTPTLAKPCYIVISKRHITMLSI
KSGERIVFTFSCQSPENHFVIEIQKNIDCMGSPCFGEVQLQPSTSLPLNRTFIWDVKAHKSIGLELQ
FSIPRLRQIGPGESCPDGVTHSISGRIDATVVRIGTFCSNGTVSRIKMQEGVKMALHLPWFHPRNVSGFS
IANRSSIKRLCIIESVFEGEGSATLMSANYPEGFPEDELMWQFVVPAPHLRASVSFLNFNLSNCERKEER
VEYYIPGSTTNPVEVKLEDKQPGNMAGNFNLSLQGCDDAQSPGILRLQFQVLVQHPQNESNKIYVVDLS
NERAMSLTIEPRPVKQSRKFVPGCFVLCESRTCSSNLTLSGSKHKISFLCDDLTRLWMNVEKTI SCTDH
RYCQRKSYSLQVPSDILHLPVELHDFSWKLLVPKDRLSLVLPVPAQKLQQTHEKPCNTSFSYLVASAI
PSQDLYFGSFCPGGSIKQIQVKQNI SVTLRTFAPSFRQEASRQGLTVSFIPYFKEEGVFTVTPDTKSKVYLR
TPNWDRLPSLTSVSWNISVPRDQVACLTFKERSGVVCQTGRAFMIIQEQRTRAEEIFSLDEDVLPKPS
FHHHSFWYINISNCSPTSGKQLDLLFSVTLTPRTVDLTVILIAAVGGGVLLLSALGLIICCVK KKKKTKN
K GPAVGIYNGNINTEMPRQPKKFQKGRKDNDSHVYAVIEDTMVYGHLLQDSSGSFLQPEVDTYRPFQGTMG
VCPPSPPTICSRAPTAKLATEEPPPRSPPESESEPYTF SHPNNGDVSSKDTDIPLLNTPQEPMEPAE

TRTRPLEQKLI SEEDLAANDILDYKDDDDKV

Tag:	C-Myc/DDK
Purity:	> 80% as determined by SDS-PAGE and Coomassie blue staining
Concentration:	>0.05 µg/µL as determined by microplate BCA method
Labeling Method:	Labeled with [U- ¹³ C ₆ , ¹⁵ N ₄]-L-Arginine and [U- ¹³ C ₆ , ¹⁵ N ₂]-L-Lysine
Buffer:	25 mM Tris-HCl, 100 mM glycine, pH 7.3
Storage:	Store at -80°C. Avoid repeated freeze-thaw cycles.
Stability:	Stable for 3 months from receipt of products under proper storage and handling conditions.
RefSeq:	NP_073753



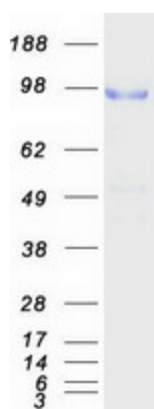
[View online »](#)

RefSeq Size:	6017
RefSeq ORF:	2508
Synonyms:	CD318; SIMA135; TRASK
Locus ID:	64866
UniProt ID:	Q9H5V8
Cytogenetics:	3p21.31

Summary: This gene encodes a transmembrane protein which contains three extracellular CUB domains and acts as a substrate for Src family kinases. The protein plays a role in the tyrosine phosphorylation-dependent regulation of cellular events that are involved in tumor invasion and metastasis. Alternative splicing results in multiple transcript variants of this gene. [provided by RefSeq, May 2013]

Protein Families: ES Cell Differentiation/IPS, Transmembrane

Product images:



Coomassie blue staining of purified CDCP1 protein (Cat# [TP320633]). The protein was produced from HEK293T cells transfected with CDCP1 cDNA clone (Cat# [RC220633]) using MegaTran 2.0 (Cat# [TT210002]).