

Product datasheet for PH320630

EBF2 (NM_022659) Human Mass Spec Standard

Product data:

Product Type:	Mass Spec Standards
Description:	EBF2 MS Standard C13 and N15-labeled recombinant protein (NP_073150)
Species:	Human
Expression Host:	HEK293
Expression cDNA Clone or AA Sequence:	RC220630
Predicted MW:	62.5 kDa
Protein Sequence:	>RC220630 representing NM_022659 Red=Cloning site Green=Tags(s)
	MFGIQDTLGRGPTLKEKSLGAEMDSVRSWVRNVGVVDANVAAQSGVALSRAHFEKQPPSNLRKSNFFHFV LALYDRQGQPVEIERTAFVDFVENDKEQGNEKTNNGTHYKQLLYSNGVRTEQDL YVRLIDSVTKQPIAY EGQKNPMECRVLLTHEVMCSRCEKSKCGNRNETPSDPVIIDRFLLKFFLKCQNCLKTAGNPRDMRRF QVVLSTTVNVDGHVLAUSDNMFVHNNSKHGRRARRLDPSEATPCIKAIISPSEGWTTGGAMVIIIGDNFFD GLQVVFMTLVWSELITPHAIRVQTPPRHIPGVVEVTLSYKSKQFCGAPGRFIYALNEPTIDYGFQRL QKVIPRHPGDPERLAKEMLLKRAADLVEALYGTPHNNQDIILKRAADIAEALYSVPRNPSQLPALSSSPA HSGMMGINSYGSQLGVSISESTQGNQGYIRNTSSISPRGYSSSSTPQQSNYSTSSNSMNGYSNVPMANL GVPGSPGFLNGSPTGSPYIMSSSPTVGSSTSSILPFSSSVFPAVKQKSAFAPVIRPQGSPSPACSSGN GNGFRAMTGLVPPM
	TRTRPLEQKLISEEDLAANDILDYKDDDDKV
Tag:	C-Myc/DDK
Purity:	> 80% as determined by SDS-PAGE and Coomassie blue staining
Concentration:	>0.05 µg/µL as determined by microplate BCA method
Labeling Method:	Labeled with [U- ¹³ C ₆ , ¹⁵ N ₄]-L-Arginine and [U- ¹³ C ₆ , ¹⁵ N ₂]-L-Lysine
Buffer:	25 mM Tris-HCl, 100 mM glycine, pH 7.3
Storage:	Store at -80°C. Avoid repeated freeze-thaw cycles.
Stability:	Stable for 3 months from receipt of products under proper storage and handling conditions.
RefSeq:	NP_073150
RefSeq Size:	2297
RefSeq ORF:	1725



[View online »](#)

Synonyms: COE2; EBF-2; O/E-3; OE-3

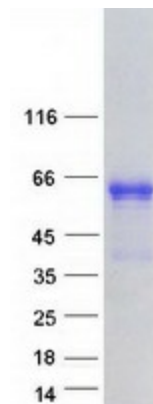
Locus ID: 64641

UniProt ID: [Q9HAK2](#), [B7Z934](#), [B2RNT0](#)

Cytogenetics: 8p21.2

Summary: The protein encoded by this gene belongs to the COE (Collier/Olf/EBF) family of non-basic, helix-loop-helix transcription factors that have a well conserved DNA binding domain. The COE family proteins play an important role in variety of developmental processes. Studies in mouse suggest that this gene may be involved in the differentiation of osteoblasts. [provided by RefSeq, Oct 2011]

Product images:



Coomassie blue staining of purified EBF2 protein (Cat# [TP320630]). The protein was produced from HEK293T cells transfected with EBF2 cDNA clone (Cat# [RC220630]) using MegaTran 2.0 (Cat# [TT210002]).