

Product datasheet for PH320599

PKC beta 1 (PRKCB) (NM_212535) Human Mass Spec Standard

Product data:

Product Type:	Mass Spec Standards
Description:	PRKCB MS Standard C13 and N15-labeled recombinant protein (NP_997700)
Species:	Human
Expression Host:	HEK293
Expression cDNA Clone or AA Sequence:	RC220599
Predicted MW:	76.7 kDa
Protein Sequence:	>RC220599 representing NM_212535 Red=Cloning site Green=Tags(s)

MADPAAGPPPSEGEESTVRFARKGALRQKNVHEVKNHKFTARFFKQPTFCSHCTDFIWGFGKQGFQCQVC
CFVVKRCHEFVTFSCPGADKGPASDDPRSKHKFKIHTYSSPTFCDHCGSLLYGLIHQGMKCDTCMMNVH
KRCVMNVPSLCGTDHTERRGRIYIQAHIDRDVLIIVLVRDAKNLVPMDPNGLSDPYVKLKLIPDPKSESKQ
KTKTIKCSLNPEWNETFRFQLKESDKDRRLSVEIWDWDLTSRNDFMGSLSFGISSELQKASVDGWFKLLSQ
EEGEYFNVPVPEGESEANEELRQKFERAKISQGTKVPEEKTNTVSKFDNNGNRDRMKLTDNFNLMVLGK
GSFGKVMLSERKGTDEL YAVKILKDDVVIQDDVECTMVEKRVLALPGKPPFLTQLHSCFQTMDRLYFVM
EYVNGGDLMYHIQQVGRFKEPHAVFYAAEIAIGLFFLQSKGIIYRDLKLDNVMLDSEGHKIADFGMCKE
NIWDGVTTKTCGTPDYIAPEIIAYQPYGKSVDWWAFGVLLYEMLAGQAPFEGEDEDL FQSIMEHNVAY
PKSMSKEAVAICKGLMTKHPGKRLGCGPEGERDIKEHAFFRYIDWEKLERKEIQPPYKPKARDKRDTSNF
DKEFTRQPVELTPTDKLFIMNLDQNEFAGFSYTNPEFVINV

TRTRPLEQKLISEEDLAANDILDYKDDDDKV

Tag:	C-Myc/DDK
Purity:	> 80% as determined by SDS-PAGE and Coomassie blue staining
Concentration:	50 ug/ml as determined by BCA
Labeling Method:	Labeled with [U- 13C6, 15N4]-L-Arginine and [U- 13C6, 15N2]-L-Lysine
Buffer:	100 mM glycine, 25 mM Tris-HCl, pH 7.3. Store at -80°C. Avoid repeated freeze-thaw cycles. Stable for 3 months from receipt of products under proper storage and handling conditions.
RefSeq:	<u>NP_997700</u>
RefSeq Size:	2319
RefSeq ORF:	2013



View online »

Synonyms: PKC-beta; PKCB; PKCbeta; PKCI(2); PRKCB1; PRKCB2

Locus ID: 5579

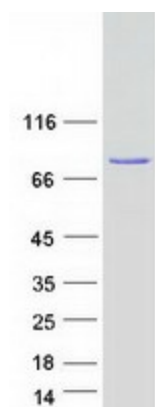
Cytogenetics: 16p12.2-p12.1

Summary: Protein kinase C (PKC) is a family of serine- and threonine-specific protein kinases that can be activated by calcium and second messenger diacylglycerol. PKC family members phosphorylate a wide variety of protein targets and are known to be involved in diverse cellular signaling pathways. PKC family members also serve as major receptors for phorbol esters, a class of tumor promoters. Each member of the PKC family has a specific expression profile and is believed to play a distinct role in cells. The protein encoded by this gene is one of the PKC family members. This protein kinase has been reported to be involved in many different cellular functions, such as B cell activation, apoptosis induction, endothelial cell proliferation, and intestinal sugar absorption. Studies in mice also suggest that this kinase may also regulate neuronal functions and correlate fear-induced conflict behavior after stress. Alternatively spliced transcript variants encoding distinct isoforms have been reported. [provided by RefSeq, Jul 2008]

Protein Families: Druggable Genome, Protein Kinase

Protein Pathways: B cell receptor signaling pathway, Calcium signaling pathway, Chemokine signaling pathway, ErbB signaling pathway, Fc epsilon RI signaling pathway, Fc gamma R-mediated phagocytosis, Focal adhesion, Gap junction, Glioma, GnRH signaling pathway, Leukocyte transendothelial migration, Long-term depression, Long-term potentiation, MAPK signaling pathway, Melanogenesis, Natural killer cell mediated cytotoxicity, Non-small cell lung cancer, Pathways in cancer, Phosphatidylinositol signaling system, Tight junction, Vascular smooth muscle contraction, VEGF signaling pathway, Vibrio cholerae infection, Wnt signaling pathway

Product images:



Coomassie blue staining of purified PRKCB protein (Cat# [TP320599]). The protein was produced from HEK293T cells transfected with PRKCB cDNA clone (Cat# [RC220599]) using MegaTran 2.0 (Cat# [TT210002]).