

## Product datasheet for PH320552

### RIT1 (NM\_006912) Human Mass Spec Standard

#### Product data:

Product Type:	Mass Spec Standards
Description:	RIT1 MS Standard C13 and N15-labeled recombinant protein (NP_008843)
Species:	Human
Expression Host:	HEK293
Expression cDNA Clone or AA Sequence:	RC220552
Predicted MW:	25.1 kDa
Protein Sequence:	>RC220552 protein sequence Red=Cloning site Green=Tags(s)  MDSGTRPVGSCCSPAGLSREYKLVMLGAGGVGKSAMTMQFISHRFPEDHPTIEDAYKIRIRIDDEPAN LDILDTAGQAEFTAMRDQYMRAGEGFIICYSITDRRSFHEVREFKQLIYRVRRTDDTPVVLVGNKSDLKQ LRQVTKEEGLALAREFSCPFSETSAAAYRYIDDFHALVREIRRKEKEAVLAMEKKSKPKNSVWKRKLSKSP FRKKKDSVT  TRTRPLEQKLI SEEDLAANDILDYKDDDDKV
Tag:	C-Myc/DDK
Purity:	> 80% as determined by SDS-PAGE and Coomassie blue staining
Concentration:	>0.05 µg/µL as determined by microplate BCA method
Labeling Method:	Labeled with [U- <sup>13</sup> C <sub>6</sub> , <sup>15</sup> N <sub>4</sub> ]-L-Arginine and [U- <sup>13</sup> C <sub>6</sub> , <sup>15</sup> N <sub>2</sub> ]-L-Lysine
Buffer:	25 mM Tris-HCl, 100 mM glycine, pH 7.3
Storage:	Store at -80°C. Avoid repeated freeze-thaw cycles.
Stability:	Stable for 3 months from receipt of products under proper storage and handling conditions.
RefSeq:	<a href="#">NP_008843</a>
RefSeq Size:	3455
RefSeq ORF:	657
Synonyms:	NS8; RIBB; RIT; ROC1
Locus ID:	6016
UniProt ID:	<a href="#">Q92963</a>

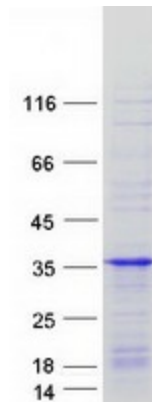


[View online »](#)

Cytogenetics: 1q22

**Summary:** This gene encodes a member of a subfamily of Ras-related GTPases. The encoded protein is involved in regulating p38 MAPK-dependent signaling cascades related to cellular stress. This protein also cooperates with nerve growth factor to promote neuronal development and regeneration. Alternate splicing results in multiple transcript variants. [provided by RefSeq, Feb 2012]

**Product images:**



Coomassie blue staining of purified RIT1 protein (Cat# [TP320552]). The protein was produced from HEK293T cells transfected with RIT1 cDNA clone (Cat# [RC220552]) using MegaTran 2.0 (Cat# [TT210002]).