

Product datasheet for **PH320541**

Integrin beta 4 (ITGB4) (NM_000213) Human Mass Spec Standard

Product data:

Product Type:	Mass Spec Standards
Description:	ITGB4 MS Standard C13 and N15-labeled recombinant protein (NP_000204)
Species:	Human
Expression Host:	HEK293
Expression cDNA Clone or AA Sequence:	RC220541
Predicted MW:	202.12 kDa



[View online »](#)

Protein Sequence: >RC220541 representing NM_000213
 Red=Cloning site Green=Tags(s)

MAGPRPSPWARLLLAALISVSLSGTLANRCKKAPVKSCTECVRVDKDCAYCTDEMFRDRRCNTQAELLAAGCQRESIVVMESFQITEETQIDTTLRRSQMSPQGLRVRLRPGEERHFELEVFEPLESPVDLYILMDFSNMSDDLNLKMGQNLARVLSQLTSDYTIIGFGKFVDKVSVPQTDMRPEKLEKWPNSDPPFSFKNVISLTEDVDEFRNKLQGERISGNLDAPEGGFDAILQTAVCTRDIGWRPDSTHLLVFSTESAFHYEADGANVLAGIMSRNDERCHLDTTGTYTQYRTQDYPSVPTLVRLAKHNIIPIFAVTNYSYSEKLTHTYFPVSSLGVLQEDSSNIVELLEAFNRIRSNLDIRALDSPRGLRTEVTSKMFQKTRTGSFHIRRGEVGIYQVQLRALEHVDGTHVCQLPEDQKGNIHLPKPSFSDGLKMDAGIICDVCTCELQKEVRSARCSFNDFVCGQCVCSEGSWGQTCNCSTGSLSDIQPCLREGEDKPCSGRGECQCGHCVCYGEGRYEGQFCEYDNFQCPRTSGFLCNDGRGCSMGQCVCEPGWTGPSCDCPLSNATCIDSNGGICNCRGHCECGRCHCHQQSLYTDTICEINYSAIHPGLCEDLRSCVQCQAWGTGEKKGRTCEECNFVKMVDLKRAEVVRCSFRDEDDCTYSYTMEDGAPGNSTVLVHKKKDCPPGSFWWLIPLLLLLLPLLLLLLCKWYCACCKACLALLPCCNRGHMVGFKEDHYMLRENLMASDHLDTMPLRSGNLKGRDVRWVVTNNMQRPGFATHAASINPTELVPYGLSLRLARLCTENLLKPDTRCAQLRQVEEENLNEYRQISGVHKLQQTFRQPNAGKKQDHTIVDTVLMAPRSAPALLKLTEKQVEQRAFHDLKVAPGYTTLADQDARGMVEFQEGVELVDVRVPLFIRPEDDDEKQLLVEAIDVPAGTATLGRRLVNIITIIKEQARDVVSFEQPEFSVSRGDQVARIPVIRRVLDGGKSQVSRYRTQDGTAAQGNRDYIPVEGELLFQPEGAWKELQVKLLELQEVDSLLRGRQVRRFHVQLSNPKFGAHLGQPHSTTIIIRDPELDRSFTSQMLSSQPPPBGDLGAPQNPNAKAAGSRKIHFNWLPPSGKPMGYRVKYWIQGDSESEAHLLDSKVPVELTNLYPYCDYEMKVCAYGAQGEQPYSSLVSCRTHQEVSEPGRALAFNVVSTVTQLSWAEPAEATNGEITAYEVCYGLVNDNRPVIGPMKKVLVDNPKNRMLLIENLRESQPYRYTVKARNAGAGWGPAREAIINLATQPKRPMSPDIPIVDAQSGEDYDSFLMYSDDVLRSPSGSQRPSVSDDTGCGWKFEPLLGEELDRRVTRWLPPELIPRLSASSGRSSDAEAPHGPPDDGGAGGKGSLSRATPGPPGEHLVNGRMDFAFPGSTNSLHRMTTTSAAAYGTHLSPHVPHRVLSTSTLTRDYNSLTRSEHSHSTTLXRDYSTLTSVSSHDSRLTAGVPDTPTRLVFSALGPTSLRVSWQEPRCERPLQGSVVEYQLLNGGELHRLNIPNPAQTSVVVEDLLPNHSYVFRVRAQSQEGWGREREGVITIESQVHPQSPLCPLPGSAFTLSTPSAPGPLVFTALSPDSLQLSWERPRRPNGDIVGYLVTCEMAQGGGPATAFRVDGDSPE SRLTVPGLESENVPYKFKVQARTTEGFGPEREGITIESQDGGPFPLGSRAGLFQHPLQSEYSSITTTHTSATEPFLVDGPTLGAQHLEAGGSLTRHVTQEFVSRTLTSTGLSTHMDQQFFPT

TRTRPLEQKLISEEDLAANDILDYKDDDDKV

Tag: C-Myc/DDK

Purity: > 80% as determined by SDS-PAGE and Coomassie blue staining

Concentration: >0.05 µg/µL as determined by microplate BCA method

Labeling Method: Labeled with [U- 13C6, 15N4]-L-Arginine and [U- 13C6, 15N2]-L-Lysine

Buffer: 25 mM Tris-HCl, 100 mM glycine, pH 7.3

Storage: Store at -80°C. Avoid repeated freeze-thaw cycles.

Stability: Stable for 3 months from receipt of products under proper storage and handling conditions.

RefSeq: [NP_000204](#)

RefSeq Size: 5925

RefSeq ORF: 5466

Synonyms: CD104; GP150

Locus ID: 3691

UniProt ID: [P16144](#), [A0A024R8T0](#)

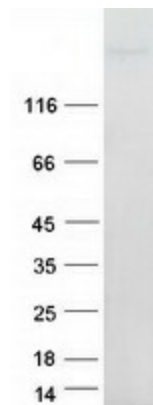
Cytogenetics: 17q25.1

Summary: Integrins are heterodimers comprised of alpha and beta subunits, that are noncovalently associated transmembrane glycoprotein receptors. Different combinations of alpha and beta polypeptides form complexes that vary in their ligand-binding specificities. Integrins mediate cell-matrix or cell-cell adhesion, and transduced signals that regulate gene expression and cell growth. This gene encodes the integrin beta 4 subunit, a receptor for the laminins. This subunit tends to associate with alpha 6 subunit and is likely to play a pivotal role in the biology of invasive carcinoma. Mutations in this gene are associated with epidermolysis bullosa with pyloric atresia. Multiple alternatively spliced transcript variants encoding distinct isoforms have been found for this gene. [provided by RefSeq, Jul 2008]

Protein Families: Druggable Genome

Protein Pathways: Arrhythmogenic right ventricular cardiomyopathy (ARVC), Dilated cardiomyopathy, ECM-receptor interaction, Focal adhesion, Hypertrophic cardiomyopathy (HCM), Regulation of actin cytoskeleton

Product images:



Coomassie blue staining of purified ITGB4 protein (Cat# [TP320541]). The protein was produced from HEK293T cells transfected with ITGB4 cDNA clone (Cat# [RC220541]) using MegaTran 2.0 (Cat# [TT210002]).