

Product datasheet for PH320515

Transglutaminase 3 (TGM3) (NM_003245) Human Mass Spec Standard

Product data:

Product Type:	Mass Spec Standards
Description:	TGM3 MS Standard C13 and N15-labeled recombinant protein (NP_003236)
Species:	Human
Expression Host:	HEK293
Expression cDNA Clone or AA Sequence:	RC220515
Predicted MW:	76.8 kDa
Protein Sequence:	>RC220515 protein sequence Red=Cloning site Green=Tags(s)

MAALGVQSINWQKAFNRQAHHTDKFSSQELILRRGQNFQVLMIMNKGLGSNERLEFIVSTGPYPSESAMT
KAVFPLSNGSSGWSAVLQASNGNTLTISISSPASAPIGRYTMALQIFSQGGISSVKLGTFILLFNPWLN
VDSVFMGNHAEREEYVQEDAGIIFVGSTNRIGMIGWNFGQFEEDILSICLSILDRSLNFRRDAATDVASR
NDPKYVGRVLSAMINSNDDNGVLGNWSGTYTGGRDPRSWNGSVEILKNWKKSGFSPVRYGQCWV FAGTL
NTALRSLGIPSRVITNFNSAHDTRNLSVDVYYDPMGNPLDKGSDSVWNFHVWNEGWFVRS DLGPSYGGW
QVLDATPQERSQGVFQCGPASVIGVREGDVQLNFDMPFIFAENVADRITWLYDNTTGKQWKNSVNSHTIG
RYISTKAVGSNARMDVTDKYKYPEGSDQERQVFQKALGKLPNTPF AATSSMGLETEEQEPSIIGKLVKA
GMLAVGKEVNLVLLLKNLSRDTKTVTNMTAWTIIYNGTLVHEVWKDSATMSLDPEEEAEHPKIKISYAQY
EKYLKSDNMIRITAVCKVPDESEVVVERDIILDNPTLTLEVLNEARVRKPVNVQMLFSNPLDEPVRDCVL
MVEGSGLLLGNLKIDVPTLGPKERSRVRFDILPSRSGTKQLLADFS CNKFPFAIKAMLSIDVAE

TRTRPLEQKLI SEEDLAANDILDYKDDDDKV

Tag:	C-Myc/DDK
Purity:	> 80% as determined by SDS-PAGE and Coomassie blue staining
Concentration:	>0.05 µg/µL as determined by microplate BCA method
Labeling Method:	Labeled with [U- 13C6, 15N4]-L-Arginine and [U- 13C6, 15N2]-L-Lysine
Buffer:	25 mM Tris-HCl, 100 mM glycine, pH 7.3
Storage:	Store at -80°C. Avoid repeated freeze-thaw cycles.
Stability:	Stable for 3 months from receipt of products under proper storage and handling conditions.
RefSeq:	NP_003236
RefSeq Size:	2679



[View online »](#)

RefSeq ORF: 2079

Synonyms: TGE; UHS2

Locus ID: 7053

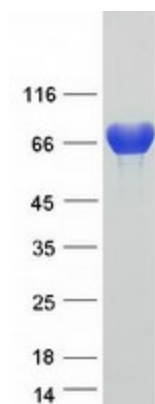
UniProt ID: [Q08188](#)

Cytogenetics: 20p13

Summary: Transglutaminases are enzymes that catalyze the crosslinking of proteins by epsilon-gamma glutamyl lysine isopeptide bonds. While the primary structure of transglutaminases is not conserved, they all have the same amino acid sequence at their active sites and their activity is calcium-dependent. The protein encoded by this gene consists of two polypeptide chains activated from a single precursor protein by proteolysis. The encoded protein is involved the later stages of cell envelope formation in the epidermis and hair follicle. [provided by RefSeq, Jul 2008]

Protein Families: Druggable Genome

Product images:



Coomassie blue staining of purified TGM3 protein (Cat# [TP320515]). The protein was produced from HEK293T cells transfected with TGM3 cDNA clone (Cat# [RC220515]) using MegaTran 2.0 (Cat# [TT210002]).