

## Product datasheet for PH320493

### Contactin 1 (CNTN1) (NM\_175038) Human Mass Spec Standard

#### Product data:

|                                       |   |
|---------------------------------------|---|
| Product Type:                         | Mass Spec Standards   |
| Description:                          | CNTN1 MS Standard C13 and N15-labeled recombinant protein (NP_778203) |
| Species:                              | Human   |
| Expression Host:                      | HEK293  |
| Expression cDNA Clone or AA Sequence: | RC220493  |
| Predicted MW:                         | 109.6 kDa   |
| Protein Sequence:                     | >RC220493 representing NM_175038<br>Red=Cloning site Green=Tags(s)    |

MKMWLLVSHLVIIISITTCCLAVSEEDKGFPIFEEQPINTIYPEESLEGKVS LNCRARASFPFVYKWRMNN  
GDVDLTSDRYSMVGGNLVINNPKQK DAGIYYCLASNNGMVRSTEATLSFGYLD PFPPEERPEVRVKEG  
KGMVLLCDPPYHFPDDL SYRWLLNEFPVITMDKRRFVSQTNGNLYIANVEASDKGNYS CFVSSPSITKS  
VFSKFIPLIPIPERTTKPYPADIVVQFKD VYALMGQNVTL ECFALGNPVPDIRWRK VLEPMPSTAEISTS  
GAVLKIFNIQLEDEGIYECEAENIRGKDKHQARIYVQAFPEWVEHINDTEVDIGSDLYWPCVATGKPIPT  
IRWLKNGYAYHKGELRLYDVTFENAGMYQCI AENTYGA IYANAELKILALAPT FEMNPMKKKILAAKGR  
VIEECKPKAAPKPKFSWSKGT EWLVNSSRIL IWEDGSLEINNITRNDGGIYTCFAENNRKANSTGTLVI  
TDPTRII LAPINADITVGENATMQCAASFD PALDLTFVVSFNGYVIDFNKENIHYQRNFMLDSNGELLIR  
NAQLKHAGRYTCTAQTIVDNSSASADLVVRGPPGPPGGLRIEDIRATSVALTWSRGS DNHSPISKYTIQT  
KTILSDDWDAKTD PPIIEGNM EAARAVDLIPWMEYEF RVVATNTLGRGEP SIPSNRIKTDGAAPNVAPS  
DVGGGGGRNRELITWAPLSREYHYGNF GYIVAFKPF DGEEWKVTVTNPDTGRYVHKDETMSPSTAFQ  
VKVKAFNNKGDGPYSLVAVINSAQDAPSEAPTEVGKVLSSSEISVHWEHVLEKIVESYQIRYWAADHKE  
EAANRVQVTSQEYSARLENLLPDTQYFIEVGACNSAGCGPPSDMIEAFTKKAPPSQPPRIISSVRSGRY  
IITWDHVVALSNESTVTGYKVL YRPDGGQHDGKLYSTHKHSIEVPIPRDGEYVVEVRAHSDGGDGVVSQVK  
ISGAPTLSPSLLGLLLPAFGILVYLEF

TRTRPLEQKLI SEEDLAANDILDYKDDDDKV

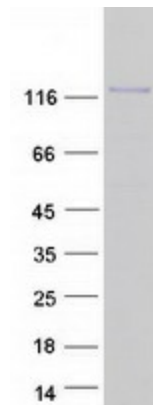
|                  |  |
|------------------|--|
| Tag:             | C-Myc/DDK  |
| Purity:          | > 80% as determined by SDS-PAGE and Coomassie blue staining  |
| Concentration:   | >0.05 µg/µL as determined by microplate BCA method   |
| Labeling Method: | Labeled with [U- <sup>13</sup> C <sub>6</sub> , <sup>15</sup> N <sub>4</sub> ]-L-Arginine and [U- <sup>13</sup> C <sub>6</sub> , <sup>15</sup> N <sub>2</sub> ]-L-Lysine |
| Buffer:          | 25 mM Tris-HCl, 100 mM glycine, pH 7.3   |
| Storage:         | Store at -80°C. Avoid repeated freeze-thaw cycles.   |



[View online »](#)

|                   |  |
|-------------------|--|
| Stability:        | Stable for 3 months from receipt of products under proper storage and handling conditions.   |
| RefSeq:           | <a href="#">NP_778203</a>  |
| RefSeq Size:      | 3394   |
| RefSeq ORF:       | 3021   |
| Synonyms:         | F3; GP135; MYPCN   |
| Locus ID:         | 1272   |
| UniProt ID:       | <a href="#">Q12860</a>   |
| Cytogenetics:     | 12q12  |
| Summary:          | The protein encoded by this gene is a member of the immunoglobulin superfamily. It is a glycosylphosphatidylinositol (GPI)-anchored neuronal membrane protein that functions as a cell adhesion molecule. It may play a role in the formation of axon connections in the developing nervous system. Multiple alternatively spliced transcript variants encoding different isoforms have been found for this gene. [provided by RefSeq, Dec 2011] |
| Protein Pathways: | Cell adhesion molecules (CAMs)   |

### Product images:



Coomassie blue staining of purified CNTN1 protein (Cat# [TP320493]). The protein was produced from HEK293T cells transfected with CNTN1 cDNA clone (Cat# [RC220493]) using MegaTran 2.0 (Cat# [TT210002]).