

## Product datasheet for PH320460

### Integrin Linked Kinase (ILK) (NM\_001014794) Human Mass Spec Standard

#### Product data:

Product Type:	Mass Spec Standards
Description:	ILK MS Standard C13 and N15-labeled recombinant protein (NP_001014794)
Species:	Human
Expression Host:	HEK293
Expression cDNA Clone or AA Sequence:	RC220460
Predicted MW:	51.4 kDa
Protein Sequence:	>RC220460 protein sequence Red=Cloning site Green=Tags(s)

MDDIFTQCREGNAVAVRLWLDNTENDLNQGDHGFSPLHWACREGRSAVVEMLIMRGARINVMNRGDDTP  
LHLAASHGHRDIVQKLLQYKADINAVNEHGNVPLHYACFWGQDQVAEDLVANGALVSIKNYGEMPVDKA  
KAPLRELLRERAEKMGQNLNRIPYKDTFWKGTTRTRPRNGTLNKHSGIDFKQLNFLTKLNENHSGELWKG  
RWQGNDIVVKVLKVRDWSTRKSRDFNEECPRLRIFSHPNVLPVLGACQSPAPHPHTLITHWMPYGSLYNV  
LHEGTNFVVDQSQAVKFDLMARGMAFLHTLEPLIPRHALNSRSMIDEDMTARISMADVKFSFQCPRGM  
YAPAWVAPEALQKKPEDTNRRSADMWSFAVLLWELVTREVPFADLSNMEIGMKVALEGLRPTIPPGISPH  
VCKLMKICMNEDPAKRPKFDMIVPILEKMQDK

TRTRPLEQKLISEEDLAANDILDYKDDDDKV

Tag:	C-Myc/DDK
Purity:	> 80% as determined by SDS-PAGE and Coomassie blue staining
Concentration:	>0.05 µg/µL as determined by microplate BCA method
Labeling Method:	Labeled with [U- <sup>13</sup> C <sub>6</sub> , <sup>15</sup> N <sub>4</sub> ]-L-Arginine and [U- <sup>13</sup> C <sub>6</sub> , <sup>15</sup> N <sub>2</sub> ]-L-Lysine
Buffer:	25 mM Tris-HCl, 100 mM glycine, pH 7.3
Storage:	Store at -80°C. Avoid repeated freeze-thaw cycles.
Stability:	Stable for 3 months from receipt of products under proper storage and handling conditions.
RefSeq:	<a href="#">NP_001014794</a>
RefSeq Size:	1797
RefSeq ORF:	1356
Synonyms:	HEL-S-28; ILK-1; ILK-2; P59; p59ILK



[View online »](#)

Locus ID: 3611

UniProt ID: [Q13418](#), [V9HWF0](#)

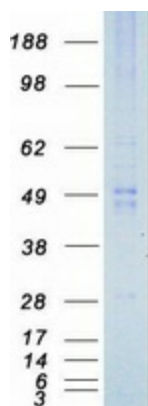
Cytogenetics: 11p15.4

**Summary:** This gene encodes a protein with a kinase-like domain and four ankyrin-like repeats. The encoded protein associates at the cell membrane with the cytoplasmic domain of beta integrins, where it regulates integrin-mediated signal transduction. Activity of this protein is important in the epithelial to mesenchymal transition, and over-expression of this gene is implicated in tumor growth and metastasis. Alternative splicing results in multiple transcript variants. [provided by RefSeq, Jun 2013]

**Protein Families:** Druggable Genome, Protein Kinase

**Protein Pathways:** Endometrial cancer, Focal adhesion, PPAR signaling pathway

### Product images:



Coomassie blue staining of purified ILK protein (Cat# [TP320460]). The protein was produced from HEK293T cells transfected with ILK cDNA clone (Cat# [RC220460]) using MegaTran 2.0 (Cat# [TT210002]).