

Product datasheet for PH320387

eRF1 (ETF1) (NM_004730) Human Mass Spec Standard

Product data:

Product Type:	Mass Spec Standards
Description:	ETF1 MS Standard C13 and N15-labeled recombinant protein (NP_004721)
Species:	Human
Expression Host:	HEK293
Expression cDNA Clone or AA Sequence:	RC220387
Predicted MW:	48.9 kDa
Protein Sequence:	>RC220387 representing NM_004730 Red=Cloning site Green=Tags(s)
	MADDPSAADRNVEIWKIKKLIKSLAARGNGTSMISLIIPPQDQISRVAKMLADEFGTASNIKSRVNRLS VLGAITSVQQLKLYNKVPPNGLVYCGTIVTEEGKEKKVNIDFEPFKPINTSLYLCDNKFHTEALTALL SDDSKFGFIVIDGSGALFGTLQGNTRVHLKFTVDLPKKHGRGGQSALRFARLRMEKRHNYVRKVAETAV QLFISGDKVNVAGLVLAGSADFTELSDMFQRLQSKVLKLVDISYGGENGFNQAIELSTEVLSNVKF IQEKKIGRYFDEISQDTGKYCFGVEDTLKALEMGAVEILIVYENLDIMRYVLHCQGTEEEKILYLTPAQ EKDKSHFTDKETGQEHLEIESMPLLEWFANNYKFGATLEIVTDKSEQSGFVKGFGGIGILRYRVDFQ GMEYQGGDDEFDLDDY
	TRTRPLEQKLISEEDLAANDILDYKDDDDKV
Tag:	C-Myc/DDK
Purity:	> 80% as determined by SDS-PAGE and Coomassie blue staining
Concentration:	>0.05 µg/µL as determined by microplate BCA method
Labeling Method:	Labeled with [U- ¹³ C ₆ , ¹⁵ N ₄]-L-Arginine and [U- ¹³ C ₆ , ¹⁵ N ₂]-L-Lysine
Buffer:	25 mM Tris-HCl, 100 mM glycine, pH 7.3
Storage:	Store at -80°C. Avoid repeated freeze-thaw cycles.
Stability:	Stable for 3 months from receipt of products under proper storage and handling conditions.
RefSeq:	<u>NP_004721</u>
RefSeq Size:	3653
RefSeq ORF:	1311
Synonyms:	D5S1995; ERF; ERF1; RF1; SUP45L1; TB3-1



[View online »](#)

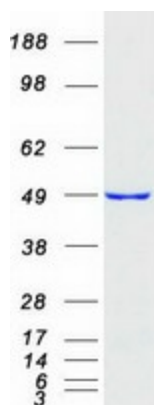
Locus ID: 2107

UniProt ID: [P62495](#)

Cytogenetics: 5q31.2

Summary: This gene encodes a class-1 polypeptide chain release factor. The encoded protein plays an essential role in directing termination of mRNA translation from the termination codons UAA, UAG and UGA. This protein is a component of the SURF complex which promotes degradation of prematurely terminated mRNAs via the mechanism of nonsense-mediated mRNA decay (NMD). Alternate splicing results in multiple transcript variants. Pseudogenes of this gene are found on chromosomes 6, 7, and X. [provided by RefSeq, Aug 2013]

Product images:



Coomassie blue staining of purified ETF1 protein (Cat# [TP320387]). The protein was produced from HEK293T cells transfected with ETF1 cDNA clone (Cat# [RC220387]) using MegaTran 2.0 (Cat# [TT210002]).