

Product datasheet for PH320338

Paralemmin (PALM) (NM_001040134) Human Mass Spec Standard

Product data:

Product Type:	Mass Spec Standards
Description:	PALM MS Standard C13 and N15-labeled recombinant protein (NP_001035224)
Species:	Human
Expression Host:	HEK293
Expression cDNA Clone or AA Sequence:	RC220338
Predicted MW:	37 kDa
Protein Sequence:	<p>>RC220338 representing NM_001040134</p> <p>Red=Cloning site Green=Tags(s)</p> <p>MEVLAAETTSQQLRLQAI AEKRKRQAEIENKRRQLEDERRQLQHLKSKALRERWLLEGTPSSASEGDEDL RRQMQDDEQKTRLLEDVSRLKEIEVLERGDSAPATAKENAAAPSPVRAPAPSPAKEERKTEVVMNSQQ TPVGTPKDKRVSNTPLRTVDGSPMMKAVVHAVDGTAEANGIHLPLSSSEVDELIHKADEVTLSEAGSTAGAA ETRGAVEGAARTTPSRREITGVQAQPGEATSGPPGIQPGQEPVMTIMFGYQNVDEAEATKKVLGLQDTI TAELVVIEDAAEPKEPAPPNGSAAEPPTAAASREENQAGPEATTSDPQDLDMKKHRCKCCSIM</p> <p>TRTRPLEQKLISEEDLAANDILDYKDDDDKV</p>
Tag:	C-Myc/DDK
Purity:	> 80% as determined by SDS-PAGE and Coomassie blue staining
Concentration:	>0.05 µg/µL as determined by microplate BCA method
Labeling Method:	Labeled with [U- ¹³ C ₆ , ¹⁵ N ₄]-L-Arginine and [U- ¹³ C ₆ , ¹⁵ N ₂]-L-Lysine
Buffer:	25 mM Tris-HCl, 100 mM glycine, pH 7.3
Storage:	Store at -80°C. Avoid repeated freeze-thaw cycles.
Stability:	Stable for 3 months from receipt of products under proper storage and handling conditions.
RefSeq:	<u>NP_001035224</u>
RefSeq Size:	2758
RefSeq ORF:	1029
Synonyms:	PALM1
Locus ID:	5064

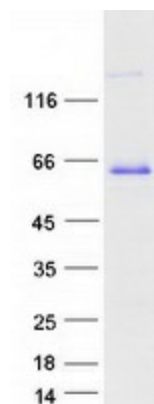

[View online »](#)

UniProt ID: [O75781](#), [A0A024R207](#)

Cytogenetics: 19p13.3

Summary: This gene encodes a member of the paralemmin protein family. The product of this gene is a prenylated and palmitoylated phosphoprotein that associates with the cytoplasmic face of plasma membranes and is implicated in plasma membrane dynamics in neurons and other cell types. Several alternatively spliced transcript variants have been identified, but the full-length nature of only two transcript variants has been determined. [provided by RefSeq, Jul 2008]

Product images:



Coomassie blue staining of purified PALM protein (Cat# [TP320338]). The protein was produced from HEK293T cells transfected with PALM cDNA clone (Cat# [RC220338]) using MegaTran 2.0 (Cat# [TT210002]).