

## Product datasheet for PH320276

### Stathmin 1 (STMN1) (NM\_203399) Human Mass Spec Standard

#### Product data:

Product Type:	Mass Spec Standards
Description:	STMN1 MS Standard C13 and N15-labeled recombinant protein (NP_981944)
Species:	Human
Expression Host:	HEK293
Expression cDNA Clone or AA Sequence:	RC220276
Predicted MW:	17.3 kDa
Protein Sequence:	>RC220276 protein sequence Red=Cloning site Green=Tags(s)  MASSDIQVKELEKRASGQAFELILSPRSKESVPEFPLSPPKPKKDFSL EEIQKKLEAAEERRKSHEAEVLK QLAEKREHEKEVLQKAI EENNF SKMAEEKLTHKMEANKENREAQMAAKLERLREKDKHIEEVRKNKESK DPADETEAD  TRTRPLEQKLI SEEDLAANDILDYKDDDDKV
Tag:	C-Myc/DDK
Purity:	> 80% as determined by SDS-PAGE and Coomassie blue staining
Concentration:	>0.05 µg/µL as determined by microplate BCA method
Labeling Method:	Labeled with [U- 13C6, 15N4]-L-Arginine and [U- 13C6, 15N2]-L-Lysine
Buffer:	25 mM Tris-HCl, 100 mM glycine, pH 7.3
Storage:	Store at -80°C. Avoid repeated freeze-thaw cycles.
Stability:	Stable for 3 months from receipt of products under proper storage and handling conditions.
RefSeq:	<a href="#">NP_981944</a>
RefSeq Size:	1518
RefSeq ORF:	447
Synonyms:	C1orf215; Lag; LAP18; OP18; PP17; PP19; PR22; SMN
Locus ID:	3925
UniProt ID:	<a href="#">P16949</a>



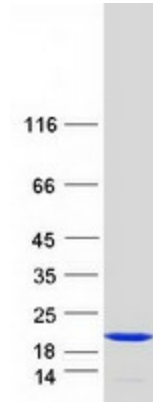
[View online »](#)

Cytogenetics: 1p36.11

**Summary:** This gene belongs to the stathmin family of genes. It encodes a ubiquitous cytosolic phosphoprotein proposed to function as an intracellular relay integrating regulatory signals of the cellular environment. The encoded protein is involved in the regulation of the microtubule filament system by destabilizing microtubules. It prevents assembly and promotes disassembly of microtubules. Multiple transcript variants encoding different isoforms have been found for this gene. [provided by RefSeq, Feb 2009]

**Protein Pathways:** MAPK signaling pathway

**Product images:**



Coomassie blue staining of purified STMN1 protein (Cat# [TP320276]). The protein was produced from HEK293T cells transfected with STMN1 cDNA clone (Cat# [RC220276]) using MegaTran 2.0 (Cat# [TT210002]).