

Product datasheet for PH320257

AKT1 (NM_005163) Human Mass Spec Standard

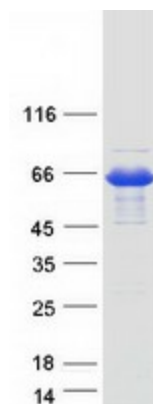
Product data:

Product Type:	Mass Spec Standards
Description:	AKT1 MS Standard C13 and N15-labeled recombinant protein (NP_005154)
Species:	Human
Expression Host:	HEK293
Expression cDNA Clone or AA Sequence:	RC220257
Predicted MW:	55.7 kDa
Protein Sequence:	>Peptide sequence encoded by RC220257 Blue=ORF Red=Cloning site Green=Tag(s) MSDVAIIVKEGWLHKRGEYIKTWRPRYFLLKNDGTFIGYKERPQDQVQREAPLNNFSVAQCQLMKTERPR PNTFIIRCLQWTTVIERTFHVETPEEREWTTAIQTVADGLKKQEEEEEMDFRSGSPSDNSGAEEMEVSL AKPKHRVMTNEFEYLKLLGKGTFGKVIIVKEKATGRYYAMKILKKEVIVAKDEVAHTLTENRVLQNSRH PFLTALKYSFQTHDRLCFVMEYANGGELFFHLSRERVSSEDRARFYGAEIVSALDYHSEKNVVYRDLK LENLMLDKDGHKIDTDFGLCKEIKDGATMKTFCGTPEYLAPEVLEDNDYGRAVDWWGLGVVMEYMMCG RLPFYNQDHEKLFELILMEEIRFPRTLGPPEAKSLLSGLLKKDPKQRLGGGSEDAKEIMQHRFFAGIVWQ HVYEKLSPPFKPQVTSETDTRYFDEEFTAQMITITPPDQDDSMCEVDSERRPHFPQFSYASAGTA TRTRPLEQKLISEEDLAANDILDYKDDDDKV Recombinant protein using RC220257 also available, TP320257
Tag:	C-Myc/DDK
Purity:	> 80% as determined by SDS-PAGE and Coomassie blue staining
Concentration:	>0.05 µg/µL as determined by microplate BCA method
Labeling Method:	Labeled with [U- 13C6, 15N4]-L-Arginine and [U- 13C6, 15N2]-L-Lysine
Buffer:	25 mM Tris-HCl, 100 mM glycine, pH 7.3
Storage:	Store at -80°C. Avoid repeated freeze-thaw cycles.
Stability:	Stable for 3 months from receipt of products under proper storage and handling conditions.
RefSeq:	NP_005154
RefSeq Size:	3008
RefSeq ORF:	1440



[View online »](#)

Synonyms:	AKT; PKB; PKB-ALPHA; PRKBA; RAC; RAC-ALPHA
Locus ID:	207
UniProt ID:	P31749 , B0LPE5 , B3KVH4
Cytogenetics:	14q32.33
Summary:	<p>This gene encodes one of the three members of the human AKT serine-threonine protein kinase family which are often referred to as protein kinase B alpha, beta, and gamma. These highly similar AKT proteins all have an N-terminal pleckstrin homology domain, a serine/threonine-specific kinase domain and a C-terminal regulatory domain. These proteins are phosphorylated by phosphoinositide 3-kinase (PI3K). AKT/PI3K forms a key component of many signalling pathways that involve the binding of membrane-bound ligands such as receptor tyrosine kinases, G-protein coupled receptors, and integrin-linked kinase. These AKT proteins therefore regulate a wide variety of cellular functions including cell proliferation, survival, metabolism, and angiogenesis in both normal and malignant cells. AKT proteins are recruited to the cell membrane by phosphatidylinositol 3,4,5-trisphosphate (PIP3) after phosphorylation of phosphatidylinositol 4,5-bisphosphate (PIP2) by PI3K. Subsequent phosphorylation of both threonine residue 308 and serine residue 473 is required for full activation of the AKT1 protein encoded by this gene. Phosphorylation of additional residues also occurs, for example, in response to insulin growth factor-1 and epidermal growth factor. Protein phosphatases act as negative regulators of AKT proteins by dephosphorylating AKT or PIP3. The PI3K/AKT signalling pathway is crucial for tumor cell survival. Survival factors can suppress apoptosis in a transcription-independent manner by activating AKT1 which then phosphorylates and inactivates components of the apoptotic machinery. AKT proteins also participate in the mammalian target of rapamycin (mTOR) signalling pathway which controls the assembly of the eukaryotic translation initiation factor 4F (eIF4E) complex and this pathway, in addition to responding to extracellular signals from growth factors and cytokines, is dysregulated in many cancers. Mutations in this gene are associated with multiple types of cancer and excessive tissue growth including Proteus syndrome and Cowden syndrome 6, and breast, colorectal, and ovarian cancers. Multiple alternatively spliced transcript variants have been found for this gene. [provided by RefSeq, Jul 2020]</p>
Protein Families:	Druggable Genome, ES Cell Differentiation/IPS, Protein Kinase
Protein Pathways:	Acute myeloid leukemia, Adipocytokine signaling pathway, Apoptosis, B cell receptor signaling pathway, Chemokine signaling pathway, Chronic myeloid leukemia, Colorectal cancer, Endometrial cancer, ErbB signaling pathway, Fc epsilon RI signaling pathway, Fc gamma R-mediated phagocytosis, Focal adhesion, Glioma, Insulin signaling pathway, Jak-STAT signaling pathway, MAPK signaling pathway, Melanoma, mTOR signaling pathway, Neurotrophin signaling pathway, Non-small cell lung cancer, Pancreatic cancer, Pathways in cancer, Progesterone-mediated oocyte maturation, Prostate cancer, Renal cell carcinoma, Small cell lung cancer, T cell receptor signaling pathway, Tight junction, Toll-like receptor signaling pathway, VEGF signaling pathway

Product images:

Coomassie blue staining of purified AKT1 protein (Cat# [TP320257]). The protein was produced from HEK293T cells transfected with AKT1 cDNA clone (Cat# [RC220257]) using MegaTran 2.0 (Cat# [TT210002]).