

Product datasheet for PH320245

CHRD L2 (NM_015424) Human Mass Spec Standard

Product data:

Product Type:	Mass Spec Standards
Description:	CHRD L2 MS Standard C13 and N15-labeled recombinant protein (NP_056239)
Species:	Human
Expression Host:	HEK293
Expression cDNA Clone or AA Sequence:	RC220245
Predicted MW:	49.5 kDa
Protein Sequence:	>RC220245 representing NM_015424 Red=Cloning site Green=Tags(s)

MVPEVRLSSLLGLALLWFPLDSHARARPDMFCLFHGKRYSPGESWHPYLEPQGLMYCLRCTCSEGAHVS
CYRLHCPPVHCPQPVTEPQQCCPKCPEPHTPSGLRAPPKSCQHNGTMYQHGEIFSAHELFP SRLPNQCVL
CSCTEGQIYCGLTTCPEPGCPAPLPLPDSCCQACKDEASEQSDEEDSVQSLHGVRHPQDPCSSDAGRKRKRG
PGTPAPTGLSAPLSFIPRHFRPKGAGSTTVKIVLKEKHKKACVHGKTYSHGEVWHPAFRAFGLPCILC
TCEDGRQDCQRVTCPT EYPCRHPKVAGKCKICPEDKADPGHSEISSTRCPKAPGRVLVHTSVSPSPDN
LRRFALEHEASDLVEIYLWKLVKDEETEAQRGEVPGPRPHSQLPLDSDQESQEARLPERGTALPTARWP
PRRSLERLPSDPGAEHGQSRQSDQDITKT

TRTRPLEQKLI SEEDLAANDILDYKDDDDKV

Tag:	C-Myc/DDK
Purity:	> 80% as determined by SDS-PAGE and Coomassie blue staining
Concentration:	>0.05 µg/µL as determined by microplate BCA method
Labeling Method:	Labeled with [U- ¹³ C ₆ , ¹⁵ N ₄]-L-Arginine and [U- ¹³ C ₆ , ¹⁵ N ₂]-L-Lysine
Buffer:	25 mM Tris-HCl, 100 mM glycine, pH 7.3
Storage:	Store at -80°C. Avoid repeated freeze-thaw cycles.
Stability:	Stable for 3 months from receipt of products under proper storage and handling conditions.
RefSeq:	<u>NP_056239</u>
RefSeq Size:	1699
RefSeq ORF:	1353
Synonyms:	BNF1; CHL2



[View online »](#)

Locus ID: 25884

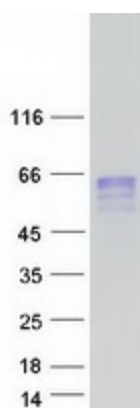
UniProt ID: [Q6WN34](#)

Cytogenetics: 11q13.4

Summary: This gene encodes a member of the chordin family of proteins. Chordin family members are secreted proteins that share a cysteine-rich pro-collagen repeat domain and associate with members of the transforming growth factor beta superfamily. In vitro assays demonstrate a direct interaction between the encoded protein and human activin A. This gene is expressed in many tissues including osteoblasts, where it is differentially expressed during differentiation. In addition, its expression is upregulated in human osteoarthritic joint cartilage, suggesting a role in adult cartilage regeneration. [provided by RefSeq, Jan 2015]

Protein Families: Secreted Protein

Product images:



Coomassie blue staining of purified CHRDL2 protein (Cat# [TP320245]). The protein was produced from HEK293T cells transfected with CHRDL2 cDNA clone (Cat# [RC220245]) using MegaTran 2.0 (Cat# [TT210002]).