

Product datasheet for PH320219

SLC30A10 (NM_018713) Human Mass Spec Standard

Product data:

Product Type:	Mass Spec Standards
Description:	SLC30A10 MS Standard C13 and N15-labeled recombinant protein (NP_061183)
Species:	Human
Expression Host:	HEK293
Expression cDNA Clone or AA Sequence:	RC220219
Predicted MW:	52.5 kDa
Protein Sequence:	>RC220219 representing NM_018713 Red=Cloning site Green=Tags(s)

MGRYSGKTCRLLFMLVLTVAFFVAELVSGYLGNSIALLSDSFNMLSDLISLCVGLSAGYIARRPTRGFSA
TYGYARAEVVGALSNAVFLTALCFITFVEAVLRLARPERIDDPVLIVGVLGLLVNVVGLLIFQDCAAW
FACCLRGRSRRLQQRQLAEGCVPGAFGGPQGAEDPRAADPTAPGSDSAVTLRGT SVERKREKATVFA
NVAGDSFNTQNEPEDMMKKEKSEALNIRGVLLHVMGDALGSVVVVITAIIFYVLPKSEDPCNWQCYID
PSLTVLMVIIILSSAFPLIKETAAILLQMPKGVNMEELMSKLSAVPGISSVHEVHIWELVSGKIIATLH
IKYPKDRGYQDASTKIREIFHHAGIHNVTIQFENVDLKEPLEQKDLLLNCNSPCISKGCAQLCCPPGAL
PLAHVNGCAEHNGGSLDITYGSDGLSRRDAREVAIEVSLDSCLSDHGQSLNKTQEDQCYVNRTHF

TRTRPLEQKLI SEEDLAANDILDYKDDDDKV

Tag:	C-Myc/DDK
Purity:	> 80% as determined by SDS-PAGE and Coomassie blue staining
Concentration:	>0.05 µg/µL as determined by microplate BCA method
Labeling Method:	Labeled with [U- ¹³ C ₆ , ¹⁵ N ₄]-L-Arginine and [U- ¹³ C ₆ , ¹⁵ N ₂]-L-Lysine
Buffer:	25 mM Tris-HCl, 100 mM glycine, pH 7.3
Storage:	Store at -80°C. Avoid repeated freeze-thaw cycles.
Stability:	Stable for 3 months from receipt of products under proper storage and handling conditions.
RefSeq:	<u>NP_061183</u>
RefSeq Size:	2869
RefSeq ORF:	1455
Synonyms:	HMDPC; HMNDYT1; ZnT-10; ZNT8; ZNT10; ZRC1



[View online »](#)

Locus ID: 55532

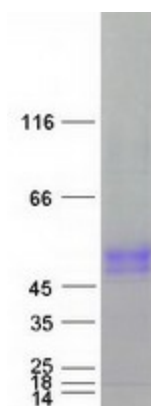
UniProt ID: [Q6XR72](#), [B3KR19](#)

Cytogenetics: 1q41

Summary: This gene is highly expressed in the liver and is inducible by manganese. Its protein product appears to be critical in maintaining manganese levels, and has higher specificity for manganese than zinc. Loss of function mutations appear to result in a pleomorphic phenotype, including dystonia and adult-onset parkinsonism. Alternatively spliced transcript variants have been observed for this gene. [provided by RefSeq, Mar 2012]

Protein Families: Transmembrane

Product images:



Coomassie blue staining of purified SLC30A10 protein (Cat# [TP320219]). The protein was produced from HEK293T cells transfected with SLC30A10 cDNA clone (Cat# [RC220219]) using MegaTran 2.0 (Cat# [TT210002]).