

Product datasheet for PH320218

INS-IGF2 (NM_001042376) Human Mass Spec Standard

Product data:

Product Type:	Mass Spec Standards
Description:	INS MS Standard C13 and N15-labeled recombinant protein (NP_001035835)
Species:	Human
Expression Host:	HEK293
Expression cDNA Clone or AA Sequence:	RC220218
Predicted MW:	21.4 kDa
Protein Sequence:	>RC220218 representing NM_001042376 Red=Cloning site Green=Tags(s) MALWMRLLPLLALLLWGPDPAAAFVNQHLCGSHLVEALYLVCGERGFFYTPKTRREAEDLQASALSLS STSTWPEGLDARAPPALVVTANIGQAGGSSSRQFRQRALGTSDSPVLFIHCPGAAGTAQGLE YRGRRV TTELVWEEVDSSPQPQGSSESLPAQPPAQPAQPEPQQAREPSPEVSCGLWPRRPQRSQN TRTRPLEQKLI SEEDLAANDILDYKDDDDKV
Tag:	C-Myc/DDK
Purity:	> 80% as determined by SDS-PAGE and Coomassie blue staining
Concentration:	>0.05 µg/µL as determined by microplate BCA method
Labeling Method:	Labeled with [U- 13C6, 15N4]-L-Arginine and [U- 13C6, 15N2]-L-Lysine
Buffer:	25 mM Tris-HCl, 100 mM glycine, pH 7.3
Storage:	Store at -80°C. Avoid repeated freeze-thaw cycles.
Stability:	Stable for 3 months from receipt of products under proper storage and handling conditions.
RefSeq:	NP_001035835
RefSeq Size:	828
RefSeq ORF:	600
Synonyms:	INSIGF
Locus ID:	723961
UniProt ID:	F8WCM5



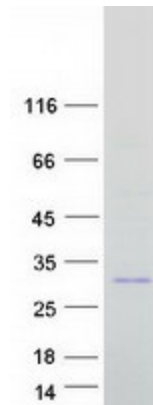
[View online »](#)

Cytogenetics: 11p15.5

Summary: This locus includes two alternatively spliced read-through transcript variants which align to the INS gene in the 5' region and to the IGF2 gene in the 3' region. One transcript is predicted to encode a protein which shares the N-terminus with the INS protein but has a distinct and longer C-terminus, whereas the other transcript is a candidate for nonsense-mediated decay (NMD). The transcripts are imprinted and are paternally expressed in the limb and eye. [provided by RefSeq, Jul 2008]

Protein Families: Druggable Genome, ES Cell Differentiation/IPS, Secreted Protein

Product images:



Coomassie blue staining of purified INS-IGF2 protein (Cat# [TP320218]). The protein was produced from HEK293T cells transfected with INS-IGF2 cDNA clone (Cat# [RC220218]) using MegaTran 2.0 (Cat# [TT210002]).