

Product datasheet for PH320187

SYCE1 (NM_130784) Human Mass Spec Standard

Product data:

Product Type:	Mass Spec Standards
Description:	SYCE1 MS Standard C13 and N15-labeled recombinant protein (NP_570140)
Species:	Human
Expression Host:	HEK293
Expression cDNA Clone or AA Sequence:	RC220187
Predicted MW:	32.4 kDa
Protein Sequence:	>RC220187 representing NM_130784 Red=Cloning site Green=Tags(s) MEMVQKLQKVGSLPRVEVLINRINEVQAKKKANKDLGEARTICEALQKELDSLHGEKVLHKEILSKKQ ETLRILRLHCQEKESEHRKHTMLQECKERISALNLQIEEEKNKQRQLRLAFEEQLEDLMGQHKDLWDFH MPERLAKEICALDSSKEQLLKKEEKLVKATLEDVKHQLCSLGAEGPSTLDEGLFLRSQEAATVQLFQEE HRKAEELLAAAAQRHQQLQKCKQQQKQRQLKEELEKHGMQVPAQAQSTQEEEAGPGDVAPRPRPVTW WS TRTRPLEQKLISEEDLAANDILDYKDDDDKV
Tag:	C-Myc/DDK
Purity:	> 80% as determined by SDS-PAGE and Coomassie blue staining
Concentration:	>0.05 µg/µL as determined by microplate BCA method
Labeling Method:	Labeled with [U- ¹³ C ₆ , ¹⁵ N ₄]-L-Arginine and [U- ¹³ C ₆ , ¹⁵ N ₂]-L-Lysine
Buffer:	25 mM Tris-HCl, 100 mM glycine, pH 7.3
Storage:	Store at -80°C. Avoid repeated freeze-thaw cycles.
Stability:	Stable for 3 months from receipt of products under proper storage and handling conditions.
RefSeq:	NP_570140
RefSeq Size:	1400
RefSeq ORF:	846
Synonyms:	C10orf94; CT76; POF12; SPGF15
Locus ID:	93426



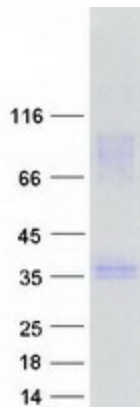
[View online »](#)

UniProt ID: [Q8N0S2](#)

Cytogenetics: 10q26.3

Summary: This gene encodes a member of the synaptonemal complex, which links homologous chromosomes during prophase I of meiosis. The tripartite structure of the complex is highly conserved amongst metazoans. It consists of two lateral elements and a central region formed by transverse elements and a central element. The protein encoded by this gene localizes to the central element and is required for initiation and elongation of the synapsis. Allelic variants of this gene have been associated with premature ovarian failure and spermatogenic failure. Alternative splicing results in multiple transcript variants. [provided by RefSeq, Nov 2016]

Product images:



Coomassie blue staining of purified SYCE1 protein (Cat# [TP320187]). The protein was produced from HEK293T cells transfected with SYCE1 cDNA clone (Cat# [RC220187]) using MegaTran 2.0 (Cat# [TT210002]).