

## Product datasheet for PH320133

### Ephrin B2 (EFNB2) (NM\_004093) Human Mass Spec Standard

#### Product data:

|                                       |   |
|---------------------------------------|---|
| Product Type:                         | Mass Spec Standards   |
| Description:                          | EFNB2 MS Standard C13 and N15-labeled recombinant protein (NP_004084) |
| Species:                              | Human   |
| Expression Host:                      | HEK293  |
| Expression cDNA Clone or AA Sequence: | RC220133  |
| Predicted MW:                         | 36.7 kDa  |
| Protein Sequence:                     | >RC220133 representing NM_004093<br>Red=Cloning site Green=Tags(s)    |

MAVRRDSVWKYCWGLMVLCRTAISKIVLEPIYWNSSNSKFLPGQGLVLYPQIGDKLDIICPKVDSKTV  
GQYEYKYYMVDKQADRCTIKKENTPLLNCAKPDQDIKFTIKFQEFSPNLWGLEFQKNKDYYIISTNSG  
SLEGLDNQEGVCQTRAMKILMKVGDASSAGSTRNKDPTRRPELEAGTNGRSSTTSPFVKPNPGSSTDG  
NSAGHSGNIIIGSEVALFAGIASGCIIFIVIIITLVVLLLKYRRRHRKHSPQHTTTLSTLATPKRSGN  
NNGSEPSDIIIPLRTADSVFCPHYEKVSGDYGHPVYIVQEMPPQSPANIYYKV

TRTRPLEQKLISEEDLAANDILDYKDDDDKV

|                  |  |
|------------------|--|
| Tag:             | C-Myc/DDK  |
| Purity:          | > 80% as determined by SDS-PAGE and Coomassie blue staining  |
| Concentration:   | >0.05 µg/µL as determined by microplate BCA method   |
| Labeling Method: | Labeled with [U- <sup>13</sup> C <sub>6</sub> , <sup>15</sup> N <sub>4</sub> ]-L-Arginine and [U- <sup>13</sup> C <sub>6</sub> , <sup>15</sup> N <sub>2</sub> ]-L-Lysine |
| Buffer:          | 25 mM Tris-HCl, 100 mM glycine, pH 7.3   |
| Storage:         | Store at -80°C. Avoid repeated freeze-thaw cycles.   |
| Stability:       | Stable for 3 months from receipt of products under proper storage and handling conditions.   |
| RefSeq:          | <u><a href="#">NP_004084</a></u>   |
| RefSeq Size:     | 4335   |
| RefSeq ORF:      | 999  |
| Synonyms:        | EPLG5; Htk-L; HTKL; LERK5  |
| Locus ID:        | 1948   |



[View online »](#)

UniProt ID: [P52799](#)

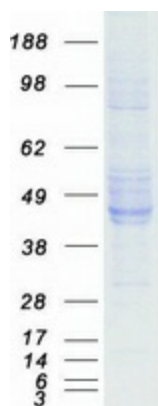
Cytogenetics: 13q33.3

**Summary:** This gene encodes a member of the ephrin (EPH) family. The ephrins and EPH-related receptors comprise the largest subfamily of receptor protein-tyrosine kinases and have been implicated in mediating developmental events, especially in the nervous system and in erythropoiesis. Based on their structures and sequence relationships, ephrins are divided into the ephrin-A (EFNA) class, which are anchored to the membrane by a glycosylphosphatidylinositol linkage, and the ephrin-B (EFNB) class, which are transmembrane proteins. This gene encodes an EFNB class ephrin which binds to the EPHB4 and EPHA3 receptors. [provided by RefSeq, Jul 2008]

**Protein Families:** Druggable Genome, Transmembrane

**Protein Pathways:** Axon guidance

### Product images:



Coomassie blue staining of purified EFNB2 protein (Cat# [TP320133]). The protein was produced from HEK293T cells transfected with EFNB2 cDNA clone (Cat# [RC220133]) using MegaTran 2.0 (Cat# [TT210002]).