

## Product datasheet for PH320093

### gamma Sarcoglycan (SGCG) (NM\_000231) Human Mass Spec Standard

#### Product data:

Product Type:	Mass Spec Standards
Description:	SGCG MS Standard C13 and N15-labeled recombinant protein (NP_000222)
Species:	Human
Expression Host:	HEK293
Expression cDNA Clone or AA Sequence:	RC220093
Predicted MW:	32.4 kDa
Protein Sequence:	>RC220093 protein sequence Red=Cloning site Green=Tags(s)  MVREQYTTATEGICIERPENQYVYKIGIYGWRKRCLYLFVLLLLIILVNLALTIWILKVMWFSPAGMGH LCVTKDGLRLEGESEFLFPLYAKEIHSRVDSLLLQSTQNVTVNARNSEGEVTGRLKVGPKMVEVQNQQF QINSNDGKPLFTYDEKEVVVGTDKLRVTGPEGALFEHSVETPLVRADPFQDLRLESPTRSLSDAPRGVH IQAHAGKIEALSQMDILFHSSDGMLVLD AETVCLPKLVQGTWGPSGSSQSLYEICVCPDGKLYLSVAGVS TTCQEHSICL  TRTRPLEQKLI SEEDLAANDILDYKDDDDKV
Tag:	C-Myc/DDK
Purity:	> 80% as determined by SDS-PAGE and Coomassie blue staining
Concentration:	>0.05 µg/µL as determined by microplate BCA method
Labeling Method:	Labeled with [U- <sup>13</sup> C <sub>6</sub> , <sup>15</sup> N <sub>4</sub> ]-L-Arginine and [U- <sup>13</sup> C <sub>6</sub> , <sup>15</sup> N <sub>2</sub> ]-L-Lysine
Buffer:	25 mM Tris-HCl, 100 mM glycine, pH 7.3
Storage:	Store at -80°C. Avoid repeated freeze-thaw cycles.
Stability:	Stable for 3 months from receipt of products under proper storage and handling conditions.
RefSeq:	<u><a href="#">NP_000222</a></u>
RefSeq Size:	1661
RefSeq ORF:	873
Synonyms:	35DAG; A4; DAGA4; DMDA; DMDA1; gamma-SG; LGMD2C; LGMDR5; MAM; SCARMD2; SCG3
Locus ID:	6445



[View online »](#)

UniProt ID: [Q13326](#)

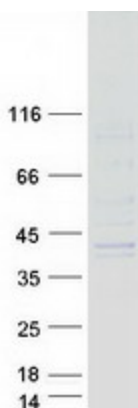
Cytogenetics: 13q12.12

**Summary:** This gene encodes gamma-sarcoglycan, one of several sarcolemmal transmembrane glycoproteins that interact with dystrophin. The dystrophin-glycoprotein complex (DGC) spans the sarcolemma and is comprised of dystrophin, syntrophin, alpha- and beta-dystroglycans and sarcoglycans. The DGC provides a structural link between the subsarcolemmal cytoskeleton and the extracellular matrix of muscle cells. Defects in the encoded protein can lead to early onset autosomal recessive muscular dystrophy, in particular limb-girdle muscular dystrophy, type 2C (LGMD2C). [provided by RefSeq, Oct 2008]

**Protein Families:** Druggable Genome, Transmembrane

**Protein Pathways:** Arrhythmogenic right ventricular cardiomyopathy (ARVC), Dilated cardiomyopathy, Hypertrophic cardiomyopathy (HCM), Viral myocarditis

### Product images:



Coomassie blue staining of purified SGCG protein (Cat# [TP320093]). The protein was produced from HEK293T cells transfected with SGCG cDNA clone (Cat# [RC220093]) using MegaTran 2.0 (Cat# [TT210002]).