

Product datasheet for PH320086

ARHGEF38 (NM_017700) Human Mass Spec Standard

Product data:

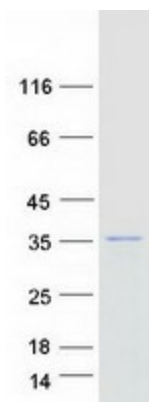
Product Type:	Mass Spec Standards
Description:	FLJ20184 MS Standard C13 and N15-labeled recombinant protein (NP_060170)
Species:	Human
Expression Host:	HEK293
Expression cDNA Clone or AA Sequence:	RC220086
Predicted MW:	25.5 kDa
Protein Sequence:	>RC220086 protein sequence Red=Cloning site Green=Tags(s) MEPK EATGKENMVTKKKNLAFLRSRLYMLERRKTDTVVESSVSGDHSGLRRSQSDRTEYNQKLQEKMTPT QGECSVAETLTPEEEHHMKRMMAKREKIIKELIQTEKDYLNDELCLVREVVQPLRNKKTDRLDVDSLFSN IESVHQISAKLLSLLEEATTDVEPAMQVIGEVFLQIKGPLEDIYKIICYHHDEAHSILESYEKEEELKEH LSHCIQSLK TRTRPLEQKLISEEDLAANDILDYKDDDDKV
Tag:	C-Myc/DDK
Purity:	> 80% as determined by SDS-PAGE and Coomassie blue staining
Concentration:	>0.05 µg/µL as determined by microplate BCA method
Labeling Method:	Labeled with [U- 13C6, 15N4]-L-Arginine and [U- 13C6, 15N2]-L-Lysine
Buffer:	25 mM Tris-HCl, 100 mM glycine, pH 7.3
Storage:	Store at -80°C. Avoid repeated freeze-thaw cycles.
Stability:	Stable for 3 months from receipt of products under proper storage and handling conditions.
RefSeq:	<u>NP_060170</u>
RefSeq Size:	1453
RefSeq ORF:	657
Locus ID:	54848
UniProt ID:	<u>Q9NXL2</u>
Cytogenetics:	4q24



[View online »](#)

Summary: May act as a guanine-nucleotide releasing factor.[UniProtKB/Swiss-Prot Function]

Product images:



Coomassie blue staining of purified ARHGEF38 protein (Cat# [TP320086]). The protein was produced from HEK293T cells transfected with ARHGEF38 cDNA clone (Cat# [RC220086]) using MegaTran 2.0 (Cat# [TT210002]).