

Product datasheet for PH320058

MYBPC2 (NM_004533) Human Mass Spec Standard

Product data:

Product Type:	Mass Spec Standards
Description:	MYBPC2 MS Standard C13 and N15-labeled recombinant protein (NP_004524)
Species:	Human
Expression Host:	HEK293
Expression cDNA Clone or AA Sequence:	RC220058
Predicted MW:	128.1 kDa
Protein Sequence:	>RC220058 protein sequence Red=Cloning site Green=Tags(s)

MPEAKPAAKKAPKGDAPKGPAPKEAPPKEAPAEAPKEAPPEDQSPTAEEPTGVFLKPKPDSVSVETGKDAV
VYAKVNGKELPDKPTIKWFKGKWLLELGSKSGARFSFKESHNSASNVYTVELHIGKVVLGDRGYRLEVKA
KDTCDSCGFNIDVEAPRQDASGQSLESFKRTSEKSDTAGELDFSGLLKKREVVEEKKKKKDDDDLGI
PPEIWELLKGAKKSEYEKIAFQYGITDLRGMLKRLKKAKVEVKSSAAFTKKLDPAYQVDRGNKIKLMVEI
SDPDLTLKWFNGQEIKPSSKYVFENVGKKRIL TINKCTLADDAAYEVAVKDEKCFTEL FVKEPPVLIVT
PLEDQQVFVGDVEMAVEVSEEGAQVMWMDGVEL TREDSFKARYRFKKGKRHILIFSDVVQEDRGRYQ
VITNGGQCEAELIVEEKQLEVLQDIADL TVKASEQAVFKCEVSDKVTGKWKYKNGVEVRPSKRITISHVG
RFHKLVIDDVRPEDEGDYTFVPDGYALS SAKLNFL EIKVEYVPKQEPPIHLDCSGKTSENAIVVAGN
KLRLDVSITGEP PPVATWLGDEVFTTTEGRTRIEKRVDCSSFVIESAQREDEGRYTIKVTNPVGEDVAS
IFLQVVDVPDPPEAVRITSVGEDWAILVWEPMPYDGGKPVGTGYLVERKKKGSQRWMLNFEVFTETTYES
TKMIEGILYEMRVFAVNAIGVSPSMNTKPFMPIAPTSEPLHLIVEDVDTTTTTLKWPPNRIGAGGIDG
YLVEYCLEGSEEWV PANTEPVERCGFTVKNLPTGARILFRVVG VNIAGRSEPATLAQPVTIREIAEPPKI
RLPRHLRQTYIRKVGQNLNLVVPFQGKPRPQVWTKGGAPL DTSRVHVRTSDFDTVFFVVRQAARSDSGEY
ELSVQIENMKDTATIRIRVVEKAGPPINVMVKEVWGTNALVEWQAPKDDGNSEIMGYFVQKADKKTMEWF
NVYERNRHTSCTVSDLIVGNEYFRVYTENICGLSDSPGVSKNTARILKTGITFKPFEYKEHDFRMAPKF
LTPLIDRVVAGYSAALNCAVRGHPKPKVWMMKNKMEIREDPKFLITNYQGVLT LNIRRPSPF DAGTYTC
RAVNELGEALAECKLEVRVPQ

TRTRPLEQKLISEEDLAANDILDYKDDDDKV

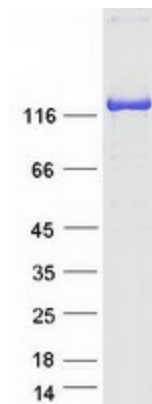
Tag:	C-Myc/DDK
Purity:	> 80% as determined by SDS-PAGE and Coomassie blue staining
Concentration:	>0.05 µg/µL as determined by microplate BCA method
Labeling Method:	Labeled with [U- ¹³ C ₆ , ¹⁵ N ₄]-L-Arginine and [U- ¹³ C ₆ , ¹⁵ N ₂]-L-Lysine
Buffer:	25 mM Tris-HCl, 100 mM glycine, pH 7.3



[View online >](#)

Storage:	Store at -80°C. Avoid repeated freeze-thaw cycles.
Stability:	Stable for 3 months from receipt of products under proper storage and handling conditions.
RefSeq:	NP_004524
RefSeq Size:	3598
RefSeq ORF:	3423
Synonyms:	fsMyBP-C; MYBPC; MYBPCF
Locus ID:	4606
UniProt ID:	Q14324 , A0A140VJQ0
Cytogenetics:	19q13.33
Summary:	This gene encodes a member of the myosin-binding protein C family. This family includes the fast-, slow- and cardiac-type isoforms, each of which is a myosin-associated protein found in the cross-bridge-bearing zone (C region) of A bands in striated muscle. The protein encoded by this locus is referred to as the fast-type isoform. Mutations in the related but distinct genes encoding the slow-type and cardiac-type isoforms have been associated with distal arthrogyriposis, type 1 and hypertrophic cardiomyopathy, respectively. [provided by RefSeq, Jul 2012]

Product images:



Coomassie blue staining of purified MYBPC2 protein (Cat# [TP320058]). The protein was produced from HEK293T cells transfected with MYBPC2 cDNA clone (Cat# [RC220058]) using MegaTran 2.0 (Cat# [TT210002]).