

## Product datasheet for PH320057

### Retinal S antigen (SAG) (NM\_000541) Human Mass Spec Standard

#### Product data:

Product Type:	Mass Spec Standards
Description:	SAG MS Standard C13 and N15-labeled recombinant protein (NP_000532)
Species:	Human
Expression Host:	HEK293
Expression cDNA Clone or AA Sequence:	RC220057
Predicted MW:	44.9 kDa
Protein Sequence:	>RC220057 representing NM_000541 Red=Cloning site Green=Tags(s)  MAASGKTSKSEPNHVIFKKISRDKSVTIYLGNRDYIDHVSQVQPV DGVVLVDPDLVKGKVVYVTLTCAFR YGQEDIDVIIGLTFRRDL YFSRVQYPPVGAASTPTKLQESLLKLG SNTYPFLLTFPDYLPCSVMLQPAP QDSGKSCGVDFEVKAFATDSTDAEEDKIPKSSVRL LIRKVQHAPLEMGPQPRAEAAWQFFMSDKPLHLA VSLNKEIYFHGEP IPVTVTNTEKTVKKIKAFVEQVANVVL YSSDYVVKPVAMEEAQEKVPPNSTLTK TLTLLPLL TNNRERRGIALDGKIKHEDTNLASSTIIKEGIDRTVLGILVSYQIKVKLTVSGFLGELTSSE VATEVPFRLMHPQPEDPAKESYQDANLVFE EFARHNLKDAGEAE EGRDKNDVDE  TRTRPLEQKLI SEEDLAANDILDYKDDDDKV
Tag:	C-Myc/DDK
Purity:	> 80% as determined by SDS-PAGE and Coomassie blue staining
Concentration:	>0.05 µg/µL as determined by microplate BCA method
Labeling Method:	Labeled with [U- <sup>13</sup> C <sub>6</sub> , <sup>15</sup> N <sub>4</sub> ]-L-Arginine and [U- <sup>13</sup> C <sub>6</sub> , <sup>15</sup> N <sub>2</sub> ]-L-Lysine
Buffer:	25 mM Tris-HCl, 100 mM glycine, pH 7.3
Storage:	Store at -80°C. Avoid repeated freeze-thaw cycles.
Stability:	Stable for 3 months from receipt of products under proper storage and handling conditions.
RefSeq:	<u><a href="#">NP_000532</a></u>
RefSeq Size:	1564
RefSeq ORF:	1215
Synonyms:	RP47; S-AG
Locus ID:	6295



[View online »](#)

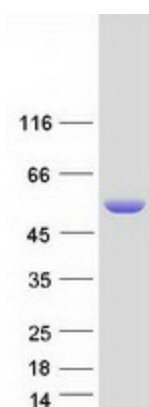
UniProt ID: [P10523](#)

Cytogenetics: 2q37.1

**Summary:** Members of arrestin/beta-arrestin protein family are thought to participate in agonist-mediated desensitization of G-protein-coupled receptors and cause specific dampening of cellular responses to stimuli such as hormones, neurotransmitters, or sensory signals. S-arrestin, also known as S-antigen, is a major soluble photoreceptor protein that is involved in desensitization of the photoactivated transduction cascade. It is expressed in the retina and the pineal gland and inhibits coupling of rhodopsin to transducin in vitro. Additionally, S-arrestin is highly antigenic, and is capable of inducing experimental autoimmune uveoretinitis. Mutations in this gene have been associated with Oguchi disease, a rare autosomal recessive form of night blindness. [provided by RefSeq, Jul 2008]

**Protein Families:** Druggable Genome

### Product images:



Coomassie blue staining of purified SAG protein (Cat# [TP320057]). The protein was produced from HEK293T cells transfected with SAG cDNA clone (Cat# [RC220057]) using MegaTran 2.0 (Cat# [TT210002]).