

## Product datasheet for PH320013

### LHFPL3 (NM\_199000) Human Mass Spec Standard

#### Product data:

Product Type:	Mass Spec Standards
Description:	LHFPL3 MS Standard C13 and N15-labeled recombinant protein (NP_945351)
Species:	Human
Expression Host:	HEK293
Expression cDNA Clone or AA Sequence:	RC220013
Predicted MW:	25.8 kDa
Protein Sequence:	<p>&gt;RC220013 protein sequence</p> <p>Red=Cloning site Green=Tags(s)</p> <p>MPGAAAAAAAAAAMLPTQEAAKLYHTNYVRNSRAIGVLWAIFTICFAIVNVCFIQPYWIGDGVDPQA            GYFGLFHYCIGNGFSRELTCRGSFDTDFSTLPSGAFKAASFFIGLSMMLIIACIICTLFFFCNTATVYKI            CAWMQLTSAACLVLGCMIFPDGWDSDVEVKRMCGEKTDKYTLGACSVRWAYILAIIGILDALILSFLAFVL            GNRQDSLMAEELKAENKVLLSQYSLE</p> <p>TRTRPLEQKLISEEDLAANDILDYKDDDDKV</p>
Tag:	C-Myc/DDK
Purity:	> 80% as determined by SDS-PAGE and Coomassie blue staining
Concentration:	>0.05 µg/µL as determined by microplate BCA method
Labeling Method:	Labeled with [U- <sup>13</sup> C <sub>6</sub> , <sup>15</sup> N <sub>4</sub> ]-L-Arginine and [U- <sup>13</sup> C <sub>6</sub> , <sup>15</sup> N <sub>2</sub> ]-L-Lysine
Buffer:	25 mM Tris-HCl, 100 mM glycine, pH 7.3
Storage:	Store at -80°C. Avoid repeated freeze-thaw cycles.
Stability:	Stable for 3 months from receipt of products under proper storage and handling conditions.
RefSeq:	<a href="#">NP_945351</a>
RefSeq Size:	3191
RefSeq ORF:	708
Synonyms:	LHFPL4
Locus ID:	375612
UniProt ID:	<a href="#">Q86UP9</a>

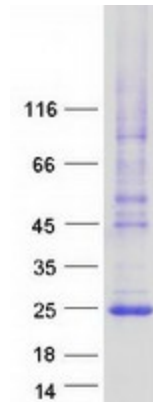

[View online »](#)

**Cytogenetics:** 7q22.2-q22.3

**Summary:** This gene is a member of the lipoma HMGIC fusion partner (LHFP) gene family, which is a subset of the superfamily of tetraspan transmembrane protein encoding genes. Mutations in one LHFP-like gene result in deafness in humans and mice, and a second LHFP-like gene is fused to a high-mobility group gene in a translocation-associated lipoma. A partial gene fragment named LHFPL4 corresponds to a portion of the first exon of this gene. [provided by RefSeq, Jul 2008]

**Protein Families:** Transmembrane

### Product images:



Coomassie blue staining of purified LHFPL3 protein (Cat# [TP320013]). The protein was produced from HEK293T cells transfected with LHFPL3 cDNA clone (Cat# [RC220013]) using MegaTran 2.0 (Cat# [TT210002]).