

Product datasheet for PH320002

TCF21 (NM_198392) Human Mass Spec Standard

Product data:

Product Type:	Mass Spec Standards
Description:	TCF21 MS Standard C13 and N15-labeled recombinant protein (NP_938206)
Species:	Human
Expression Host:	HEK293
Expression cDNA Clone or AA Sequence:	RC220002
Predicted MW:	19.5 kDa
Protein Sequence:	>RC220002 representing NM_198392 Red =Cloning site Green =Tags(s) MSTGSLSDVEDLQEVEMLECDGLKMDSNKEFVTSNESTEESNCENGSPQKGRGGLGKRRKAPTKKSPLS GVSQEGKQVQRNAANARERARMVLSKAFSRLKTTLPWVPPDTKLSKLDLRLASSYIAHLRQILANDKY ENGYIHPVNLTWPFMVAGKPESDLKEVVTASRLCGTTAS TR TRPLEQKLISEEDLAANDILDYKDDDDKV
Tag:	C-Myc/DDK
Purity:	> 80% as determined by SDS-PAGE and Coomassie blue staining
Concentration:	>0.05 µg/µL as determined by microplate BCA method
Labeling Method:	Labeled with [U- ¹³ C ₆ , ¹⁵ N ₄]-L-Arginine and [U- ¹³ C ₆ , ¹⁵ N ₂]-L-Lysine
Buffer:	25 mM Tris-HCl, 100 mM glycine, pH 7.3
Storage:	Store at -80°C. Avoid repeated freeze-thaw cycles.
Stability:	Stable for 3 months from receipt of products under proper storage and handling conditions.
RefSeq:	NP_938206
RefSeq Size:	3231
RefSeq ORF:	537
Synonyms:	bHLHa23; POD1
Locus ID:	6943
UniProt ID:	O43680



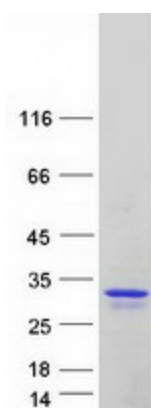
[View online »](#)

Cytogenetics: 6q23.2

Summary: TCF21 encodes a transcription factor of the basic helix-loop-helix family. The TCF21 product is mesoderm specific, and expressed in embryonic epicardium, mesenchyme-derived tissues of lung, gut, gonad, and both mesenchymal and glomerular epithelial cells in the kidney. Two transcript variants encoding the same protein have been found for this gene. [provided by RefSeq, Jul 2008]

Protein Families: Druggable Genome, Transcription Factors

Product images:



Coomassie blue staining of purified TCF21 protein (Cat# [TP320002]). The protein was produced from HEK293T cells transfected with TCF21 cDNA clone (Cat# [RC220002]) using MegaTran 2.0 (Cat# [TT210002]).