

## Product datasheet for PH319975

### LASP1 (NM\_006148) Human Mass Spec Standard

#### Product data:

Product Type:	Mass Spec Standards
Description:	LASP1 MS Standard C13 and N15-labeled recombinant protein (NP_006139)
Species:	Human
Expression Host:	HEK293
Expression cDNA Clone or AA Sequence:	RC219975
Predicted MW:	29.5 kDa
Protein Sequence:	>RC219975 representing NM_006148 Red=Cloning site Green=Tags(s)  MNPNCARCGKIVYPTEKVNCLDKFVHKACFHCETCKMTLNMKNYKGYEKKPYCNAHYPKQSFTMVADTPE NLRLKQQSELQSQVRYKEEFKKNKGKGFVAVADTPELQRIKKTQDQISNIKYHEEFKSRMGPSGGEGME PERRDSQDGSSYRRPLEQQPHHIPTSAVYQQPQQPVAQSYGGYKEPAAPVSIQRSAPGGGKRYRAV YDYSAADEVVSFQDGTIVNVQQIDDGWYGTVERTGDTGMLPANYVEAI  TRTRPLEQKLI SEEDLAANDILDYKDDDDKV
Tag:	C-Myc/DDK
Purity:	> 80% as determined by SDS-PAGE and Coomassie blue staining
Concentration:	>0.05 µg/µL as determined by microplate BCA method
Labeling Method:	Labeled with [U- <sup>13</sup> C <sub>6</sub> , <sup>15</sup> N <sub>4</sub> ]-L-Arginine and [U- <sup>13</sup> C <sub>6</sub> , <sup>15</sup> N <sub>2</sub> ]-L-Lysine
Buffer:	25 mM Tris-HCl, 100 mM glycine, pH 7.3
Storage:	Store at -80°C. Avoid repeated freeze-thaw cycles.
Stability:	Stable for 3 months from receipt of products under proper storage and handling conditions.
RefSeq:	<a href="#">NP_006139</a>
RefSeq Size:	3846
RefSeq ORF:	783
Synonyms:	Lasp-1; MLN50
Locus ID:	3927
UniProt ID:	<a href="#">Q14847</a> , <a href="#">A0A024R1S8</a>



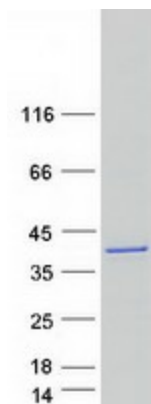
[View online »](#)

**Cytogenetics:** 17q12

**Summary:** This gene encodes a member of a subfamily of LIM proteins, characterized by a LIM motif and a domain of Src homology region 3, and also a member of the nebulin family of actin-binding proteins. The encoded protein is a cAMP and cGMP dependent signaling protein and binds to the actin cytoskeleton at extensions of the cell membrane. The encoded protein has been linked to metastatic breast cancer, hematopoietic tumors such as B-cell lymphomas, and colorectal cancer. [provided by RefSeq, Oct 2012]

**Protein Families:** Druggable Genome

### Product images:



Coomassie blue staining of purified LASP1 protein (Cat# [TP319975]). The protein was produced from HEK293T cells transfected with LASP1 cDNA clone (Cat# [RC219975]) using MegaTran 2.0 (Cat# [TT210002]).