

Product datasheet for PH319913

DGKE (NM_003647) Human Mass Spec Standard

Product data:

Product Type:	Mass Spec Standards
Description:	DGKE MS Standard C13 and N15-labeled recombinant protein (NP_003638)
Species:	Human
Expression Host:	HEK293
Expression cDNA Clone or AA Sequence:	RC219913
Predicted MW:	63.7 kDa
Protein Sequence:	>RC219913 representing NM_003647 Red=Cloning site Green=Tags(s)

MEAERRPAPGSPSEGLFADGHLILWTLCSVLLPVFITFWCSLQRSRRQLHRRDIFRKSKHGWRDSDLFSQ
PTYCCVCAQHILQGAFDCCGLRVDEGCLRKADKRFQCKEIMLKNDTKVLDAMPHHWIRGNVPLCSYCMV
CKQQCGCQPKLCDYRCIWCQKTVHDECMKNSLKNEKCDFGEFKNLIIPPSYLT SINQMRKDKKTDYEVLA
SKLGKQWTPLIILANSRSGTNMGEGLLGEFRILLNPVQVFDVTKTPPIKALQLCTLLPYYSARVLCVGGD
GTVGWVLDVAVDDMKIKGQEKYIPQVAVLPLGTGNDL SNTL GWGTGYAGEIPVAQVLRNVMEADGIKLDWR
KVQVTNKGYYNLRKPKEFTMNNYF SVGPDALMALNFHAHREKAPSLFSSRILNKAVYLFYGT KDCLVQEC
KDLNKKVELELDGERVALPSLEGIIVLNIGYGGGCRLEWGMGDETYPLARHDDGLLEVVGVYGSFHCQAQ
IQVKLANPFRIGQAHTVRLILKCSMMPMQVDGEPWAQGPCTVTITHKTHAMMLYFSGEQTDDDISSTS DQ
EDIKATE

TRTRPLEQKLI SEEDLAANDILDYKDDDDKV

Tag:	C-Myc/DDK
Purity:	> 80% as determined by SDS-PAGE and Coomassie blue staining
Concentration:	>0.05 µg/µL as determined by microplate BCA method
Labeling Method:	Labeled with [U- ¹³ C ₆ , ¹⁵ N ₄]-L-Arginine and [U- ¹³ C ₆ , ¹⁵ N ₂]-L-Lysine
Buffer:	25 mM Tris-HCl, 100 mM glycine, pH 7.3
Storage:	Store at -80°C. Avoid repeated freeze-thaw cycles.
Stability:	Stable for 3 months from receipt of products under proper storage and handling conditions.
RefSeq:	NP_003638
RefSeq Size:	2562
RefSeq ORF:	1701



[View online »](#)

Synonyms: AHUS7; DAGK5; DAGK6; DGK; NPHS7

Locus ID: 8526

UniProt ID: [P52429](#), [A1L4Q0](#)

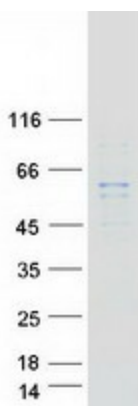
Cytogenetics: 17q22

Summary: Diacylglycerol kinases are thought to be involved mainly in the regeneration of phosphatidylinositol (PI) from diacylglycerol in the PI-cycle during cell signal transduction. When expressed in mammalian cells, DGK-epsilon shows specificity for arachidonyl-containing diacylglycerol. DGK-epsilon is expressed predominantly in testis. [provided by RefSeq, Jul 2008]

Protein Families: Druggable Genome, Transmembrane

Protein Pathways: Glycerolipid metabolism, Glycerophospholipid metabolism, Metabolic pathways, Phosphatidylinositol signaling system

Product images:



Coomassie blue staining of purified DGKE protein (Cat# [TP319913]). The protein was produced from HEK293T cells transfected with DGKE cDNA clone (Cat# [RC219913]) using MegaTran 2.0 (Cat# [TT210002]).