

Product datasheet for PH319899

TMEM215 (NM_212558) Human Mass Spec Standard

Product data:

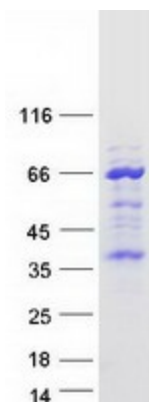
Product Type:	Mass Spec Standards
Description:	TMEM215 MS Standard C13 and N15-labeled recombinant protein (NP_997723)
Species:	Human
Expression Host:	HEK293
Expression cDNA Clone or AA Sequence:	RC219899
Predicted MW:	25.6 kDa
Protein Sequence:	>RC219899 representing NM_212558 Red=Cloning site Green=Tags(s) MRPDDINPRTGLVVALVSVFLVFGFMFTVSGMKGETLGNIPLLAIGPAICLPGIAAIALARKTEGCTKRP ENELLWVRKLPFCFRKPKDKEVVELLRTPSDLESGKSSDELAKKAGLRGKPPPQSQGEVSVASSINSPTP TEEGECQSLVQNGHQEETSRYL DGYCPSGSSLTYSALDVKCSARDRSECEPEDSIFFPVQDSIIVCSYK QNSPYDRYCCYINQIQGRWDHETIV TRTRPLEQKLI SEEDLAANDILDYKDDDDKV
Tag:	C-Myc/DDK
Purity:	> 80% as determined by SDS-PAGE and Coomassie blue staining
Concentration:	>0.05 µg/µL as determined by microplate BCA method
Labeling Method:	Labeled with [U- 13C6, 15N4]-L-Arginine and [U- 13C6, 15N2]-L-Lysine
Buffer:	25 mM Tris-HCl, 100 mM glycine, pH 7.3
Storage:	Store at -80°C. Avoid repeated freeze-thaw cycles.
Stability:	Stable for 3 months from receipt of products under proper storage and handling conditions.
RefSeq:	NP_997723
RefSeq Size:	3581
RefSeq ORF:	705
Locus ID:	401498
UniProt ID:	Q68D42
Cytogenetics:	9p21.1



[View online »](#)

Protein Families: Transmembrane

Product images:



Coomassie blue staining of purified TMEM215 protein (Cat# [TP319899]). The protein was produced from HEK293T cells transfected with TMEM215 cDNA clone (Cat# [RC219899]) using MegaTran 2.0 (Cat# [TT210002]).