

Product datasheet for PH319873

TCEAL1 (NM_004780) Human Mass Spec Standard

Product data:

Product Type:	Mass Spec Standards
Description:	TCEAL1 MS Standard C13 and N15-labeled recombinant protein (NP_004771)
Species:	Human
Expression Host:	HEK293
Expression cDNA Clone or AA Sequence:	RC219873
Predicted MW:	18.6 kDa
Protein Sequence:	>RC219873 protein sequence Red=Cloning site Green=Tags(s) MDKPRKENEEEPQSAPKTDEERPPVEHSPEKQSPEEQSSEEQSSEEEFFPEELLPELLPEMLLSEERPPQ EGLSRKDLFEGRPPMEQPPCGVGKHKLEEGSFKERLARSRPQFRGDIHGRNLSNEEMIQAADLEEMKRV RNKLMIMHWKAKRSRPYPI TRTRPLEQKLI SEEDLAANDILDYKDDDDKV
Tag:	C-Myc/DDK
Purity:	> 80% as determined by SDS-PAGE and Coomassie blue staining
Concentration:	>0.05 µg/µL as determined by microplate BCA method
Labeling Method:	Labeled with [U- 13C6, 15N4]-L-Arginine and [U- 13C6, 15N2]-L-Lysine
Buffer:	25 mM Tris-HCl, 100 mM glycine, pH 7.3
Storage:	Store at -80°C. Avoid repeated freeze-thaw cycles.
Stability:	Stable for 3 months from receipt of products under proper storage and handling conditions.
RefSeq:	NP_004771
RefSeq Size:	1220
RefSeq ORF:	477
Synonyms:	p21; pp21; SIIR; WEX9
Locus ID:	9338
UniProt ID:	Q15170



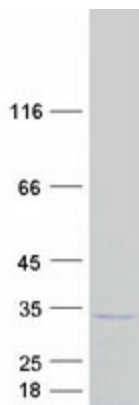
[View online »](#)

Cytogenetics: Xq22.2

Summary: This gene encodes a member of the transcription elongation factor A (SII)-like (TCEAL) gene family. Members of this family may function as nuclear phosphoproteins that modulate transcription in a promoter context-dependent manner. The encoded protein is similar to transcription elongation factor A/transcription factor SII and contains a zinc finger-like motif as well as a sequence related to the transcription factor SII Pol II-binding region. It may exert its effects via protein-protein interactions with other transcriptional regulators rather than via direct binding of DNA. Multiple family members are located on the X chromosome. Alternative splicing results in multiple transcript variants encoding a single isoform. [provided by RefSeq, Jul 2008]

Protein Families: Transcription Factors

Product images:



Coomassie blue staining of purified TCEAL1 protein (Cat# [TP319873]). The protein was produced from HEK293T cells transfected with TCEAL1 cDNA clone (Cat# [RC219873]) using MegaTran 2.0 (Cat# [TT210002]).