

## Product datasheet for PH319860

### SH3BP1 (NM\_018957) Human Mass Spec Standard

#### Product data:

Product Type:	Mass Spec Standards
Description:	SH3BP1 MS Standard C13 and N15-labeled recombinant protein (NP_061830)
Species:	Human
Expression Host:	HEK293
Expression cDNA Clone or AA Sequence:	RC219860
Predicted MW:	75.5 kDa
Protein Sequence:	>RC219860 representing NM_018957 Red=Cloning site Green=Tags(s)

MMKRQLHRMRQLAQTGSLGRTPETAFLGEDLLQVEQRLEPAKRAAHNIHKRLQACLQGQSGADMCKRVK  
KLPLMALSTTMAESFKELDPDSSMGKALEMSCAIQNQLARILAEFEMTLERDVLQPLSRLSEEELPAILK  
HKKSLQKLVSDWNTLKSRLSQATKNSGSSQGLGGSPGSHSHTTMANKVETLKEEEEELKRKVEQCRDEYL  
ADLYHFVTKEDSYANYFIRLLEIQADYHRRSLSSLDTALAELENHGQADHSPSMTATHFPRVYGVSLAT  
HLQELGREIALPIEACVMMLLSEGMKEEGLFRLAAGASVLKRLKQTMASDPHSLEEFCSDPHAVAGALKS  
YLRELPEPLMTFDLYDDWMRAASLKEPGARLQALQEVCSRLPPENLSNLRYLKFLARLAEQEVNKMP  
SNIAIVLGNLLWPPEKEGDQAQLDAASVSSIQVVGVEALIQSADTLFPGDINFVNSGLFSAVTLQDTV  
SDRLASEELPSTAVPTPATTPAPAPAPAPALASAATKERTESEVPPRPASPKVTRSPPETAAPVED  
MARRTKRPAPARPTMPPQVSGSRSSPPAPPLPPGSGSPGTPQALPRRLVGSRLRAPTVPPPLPPTPPQP  
ARRQSRSPASPPASPGPASPSPVSLSNPAQVDLGAATAEGGAPEAISGVPTTTPAIPQPRRSLASET  
N

TRTRPLEQKLISEEDLAANDILDYKDDDDKV

Tag:	C-Myc/DDK
Purity:	> 80% as determined by SDS-PAGE and Coomassie blue staining
Concentration:	>0.05 µg/µL as determined by microplate BCA method
Labeling Method:	Labeled with [U- 13C6, 15N4]-L-Arginine and [U- 13C6, 15N2]-L-Lysine
Buffer:	25 mM Tris-HCl, 100 mM glycine, pH 7.3
Storage:	Store at -80°C. Avoid repeated freeze-thaw cycles.
Stability:	Stable for 3 months from receipt of products under proper storage and handling conditions.
RefSeq:	<u><a href="#">NP_061830</a></u>

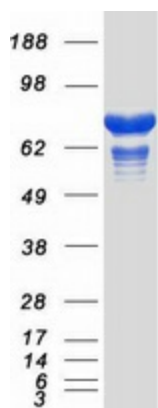


[View online »](#)

RefSeq Size:	2592
RefSeq ORF:	2103
Synonyms:	ARHGAP43
Locus ID:	23616
UniProt ID:	<a href="#">Q9Y3L3</a> , <a href="#">A0A2X0SFX7</a>
Cytogenetics:	22q13.1

**Summary:** This gene encodes a member of the Rho GTPase activating protein (RhoGAP) family. The encoded protein regulates Rac signaling and plays a role in cytoskeletal dynamics, cell motility and epithelial junction formation. This protein's association with the exocyst complex, which tethers secretory vesicles to the plasma membrane, has been demonstrated to be important in cell motility. In a distinct complex, this protein has been shown to regulate epithelial junction formation and morphogenesis. By interacting with the Plexin-D1 cell surface receptor, this protein mediates changes in the cytoskeleton in response to semaphorin binding. This protein may promote metastasis in human liver cancer cells and tissues. [provided by RefSeq, Mar 2017]

### Product images:



Coomassie blue staining of purified SH3BP1 protein (Cat# [TP319860]). The protein was produced from HEK293T cells transfected with SH3BP1 cDNA clone (Cat# [RC219860]) using MegaTran 2.0 (Cat# [TT210002]).