

Product datasheet for PH319858

NEU2 (NM_005383) Human Mass Spec Standard

Product data:

Product Type:	Mass Spec Standards
Description:	NEU2 MS Standard C13 and N15-labeled recombinant protein (NP_005374)
Species:	Human
Expression Host:	HEK293
Expression cDNA Clone or AA Sequence:	RC219858
Predicted MW:	42.1 kDa
Protein Sequence:	>RC219858 representing NM_005383 Red=Cloning site Green=Tags(s) MASLPVLQKESVFGSGAHAYRIPALLYLPGQQSLLAFAEQRASKKDEHAELIVLRRGDYDAPTHQVQWQA QEVVAQARLDGHRSMNPCPLYDAQGTGLFFIAIPGQVTEQQQLQTRANVTRLCQVSTDHGRTWSSPR DLTDAAI GPAYREWSTFAVGPCHCLQLNDRARSLVVPAYAYRKLHP IQRPIPSAFCFLSHDHGRTWARGH FVAQDTLECVAEVETGEQRVVTLNARSHLRARVQAQSTNDGLDFQESQLVKKLVEPPPQGCQGSVISFP SPRSGPGSPAQWLLYTHPTHSWQRADLGAYLNPRPPAPEAWSEPVLLAKGSCAYSIDLQSMGTGPDGSPFL GCLYEANDYEEIVFLMFTLKQAFPAEYLPQ TRTRPLEQKLI SEEDLAANDILDYKDDDDKV
Tag:	C-Myc/DDK
Purity:	> 80% as determined by SDS-PAGE and Coomassie blue staining
Concentration:	>0.05 µg/µL as determined by microplate BCA method
Labeling Method:	Labeled with [U- ¹³ C ₆ , ¹⁵ N ₄]-L-Arginine and [U- ¹³ C ₆ , ¹⁵ N ₂]-L-Lysine
Buffer:	25 mM Tris-HCl, 100 mM glycine, pH 7.3
Storage:	Store at -80°C. Avoid repeated freeze-thaw cycles.
Stability:	Stable for 3 months from receipt of products under proper storage and handling conditions.
RefSeq:	NP_005374
RefSeq Size:	1143
RefSeq ORF:	1140
Synonyms:	SIAL2
Locus ID:	4759



[View online »](#)

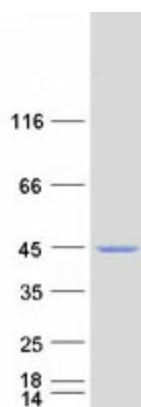
UniProt ID: [Q9Y3R4](#)

Cytogenetics: 2q37.1

Summary: This gene belongs to a family of glycohydrolytic enzymes which remove sialic acid residues from glycoproteins and glycolipids. Expression studies in COS7 cells confirmed that this gene encodes a functional sialidase. Its cytosolic localization was demonstrated by cell fractionation experiments. [provided by RefSeq, Jul 2008]

Protein Pathways: Other glycan degradation, Sphingolipid metabolism

Product images:



Coomassie blue staining of purified NEU2 protein (Cat# [TP319858]). The protein was produced from HEK293T cells transfected with NEU2 cDNA clone (Cat# [RC219858]) using MegaTran 2.0 (Cat# [TT210002]).