

## Product datasheet for PH319781

### AMOTL2 (NM\_016201) Human Mass Spec Standard

#### Product data:

Product Type:	Mass Spec Standards
Description:	AMOTL2 MS Standard C13 and N15-labeled recombinant protein (NP_057285)
Species:	Human
Expression Host:	HEK293
Expression cDNA Clone or AA Sequence:	RC219781
Predicted MW:	85.7 kDa
Protein Sequence:	>RC219781 representing NM_016201 Red=Cloning site Green=Tags(s)

MRTLEDSSGTVLHRLIQEQLRYGNLTETRTLLAIQQQALRGGAGTGGTGSFPQASLEILAPEDSQVLQQAT  
RQEPQQQEHQGGENHLAENTLYRLCPQPSKGEELPTYEEAKAHSQYYAAQQAGTRPHAGDRDPRGAPGGS  
RRQDEALRELRHGHVRSLSERLLQLSLERNGARAPSHMSSSHSFPQLARNQQGPPLRGPPAEGPESRGPP  
PQYPHVLAHETTTAVTDPYRARGSPHFQHAEVRIILQAQVPPVFLQQQQYQYLQSSQEHPPPHPAAL  
GHGPLSSLSPPAVEGPVSAQASSATSGSAHLAQMEAVLRENARLQRDNERLQRELESSAEKAGRIEKLES  
EIQRLSEAHESL TRASSKREALEKTMRNKMDSEMRRLLQDFNRDLRERLESANRRLASKTQEAQAGSQDMV  
AKLLAQSYEQQEQEKLEREMALLRGAIEDQRRRAELLEQALGNAQGRAARAEELRKKQAYVEKVERLQ  
QALGQLQAACEKRELELRRLRTRLEQELKALRAQQRQAGAPGGSSGSGGSPELSALRLSEQLREKEEQIL  
ALEADMTKWEQKYLEERAMRQFAMDAAATAAAQRDTTLIRHSPQSPSSSFNEGLLTGGHRHQEMESRLK  
VLHAQILEKDAVIKVLQQRSRDPGKAIQGSRLPAKSVPSVFAAAAAGTQGWQLSSSERQTADAPARLT  
TADRAPTEEPVVTAPPAAHAKHGSRDGSTQTEGPPDSTSTCLPPEPDSLLGCSSSQRAASLDSVATSRVQ  
DLSDMVEILI

TRTRPLEQKLISEEDLAANDILDYKDDDDKV

Tag:	C-Myc/DDK
Purity:	> 80% as determined by SDS-PAGE and Coomassie blue staining
Concentration:	>0.05 µg/µL as determined by microplate BCA method
Labeling Method:	Labeled with [U- <sup>13</sup> C <sub>6</sub> , <sup>15</sup> N <sub>4</sub> ]-L-Arginine and [U- <sup>13</sup> C <sub>6</sub> , <sup>15</sup> N <sub>2</sub> ]-L-Lysine
Buffer:	25 mM Tris-HCl, 100 mM glycine, pH 7.3
Storage:	Store at -80°C. Avoid repeated freeze-thaw cycles.
Stability:	Stable for 3 months from receipt of products under proper storage and handling conditions.
RefSeq:	<a href="#">NP_057285</a>

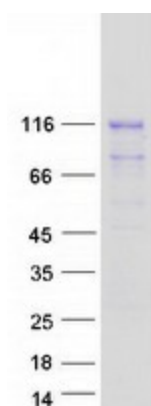


[View online »](#)

RefSeq Size:	4984
RefSeq ORF:	2340
Synonyms:	LCCP
Locus ID:	51421
UniProt ID:	<a href="#">Q9Y2J4</a>
Cytogenetics:	3q22.2

**Summary:** Angiotensin is a protein that binds angiotensin, a circulating inhibitor of the formation of new blood vessels (angiogenesis). Angiotensin mediates angiotensin inhibition of endothelial cell migration and tube formation in vitro. The protein encoded by this gene is related to angiotensin and is a member of the motin protein family. Alternative splicing results in multiple transcript variants of this gene. [provided by RefSeq, Jul 2013]

### Product images:



Coomassie blue staining of purified AMOTL2 protein (Cat# [TP319781]). The protein was produced from HEK293T cells transfected with AMOTL2 cDNA clone (Cat# [RC219781]) using MegaTran 2.0 (Cat# [TT210002]).