

Product datasheet for PH319762

FHL2 (NM_001039492) Human Mass Spec Standard

Product data:

Product Type:	Mass Spec Standards
Description:	FHL2 MS Standard C13 and N15-labeled recombinant protein (NP_001034581)
Species:	Human
Expression Host:	HEK293
Expression cDNA Clone or AA Sequence:	RC219762
Predicted MW:	32.2 kDa
Protein Sequence:	>RC219762 protein sequence Red=Cloning site Green=Tags(s)
	<p>MTERFDCHHCNESLFGKKYILREESPYCVVCFETLFANTCEECKGKPIGCDCKDLSYKDRHWHEACFHCSQ CRNSLVDPKFAAKEDQLLCTDCYSNEYSSKQCECKKTIMPGRKMEYKGSWHETCFICHRCQQPIGTKS FIPKDNQNFVPCYEKQHMQCVQCKKPITTTGGVTYREQPWHKECFVCTACRKQLSGQRFRTARDDFAYCL NCFCDLYAKKCAGCTNPISGLGGTKYISFEERQWHNDCFNCKKCSLSLVGRGFLTERDDILCPDCGKDI</p> <p>TRTRPLEQKLI SEEDLAANDILDYKDDDDKV</p>
Tag:	C-Myc/DDK
Purity:	> 80% as determined by SDS-PAGE and Coomassie blue staining
Concentration:	>0.05 µg/µL as determined by microplate BCA method
Labeling Method:	Labeled with [U- ¹³ C ₆ , ¹⁵ N ₄]-L-Arginine and [U- ¹³ C ₆ , ¹⁵ N ₂]-L-Lysine
Buffer:	25 mM Tris-HCl, 100 mM glycine, pH 7.3
Storage:	Store at -80°C. Avoid repeated freeze-thaw cycles.
Stability:	Stable for 3 months from receipt of products under proper storage and handling conditions.
RefSeq:	NP_001034581
RefSeq Size:	1552
RefSeq ORF:	837
Synonyms:	AAG11; DRAL; FHL-2; SLIM-3; SLIM3
Locus ID:	2274
UniProt ID:	Q14192 , Q6I9R8 , Q2XQU9



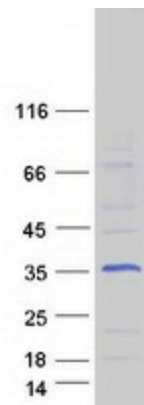
[View online »](#)

Cytogenetics: 2q12.2

Summary: This gene encodes a member of the four-and-a-half-LIM-only protein family. Family members contain two highly conserved, tandemly arranged, zinc finger domains with four highly conserved cysteines binding a zinc atom in each zinc finger. This protein is thought to have a role in the assembly of extracellular membranes. Also, this gene is down-regulated during transformation of normal myoblasts to rhabdomyosarcoma cells and the encoded protein may function as a link between presenilin-2 and an intracellular signaling pathway. Multiple alternatively spliced variants encoding different isoforms have been identified. [provided by RefSeq, Jan 2016]

Protein Families: Druggable Genome

Product images:



Coomassie blue staining of purified FHL2 protein (Cat# [TP319762]). The protein was produced from HEK293T cells transfected with FHL2 cDNA clone (Cat# [RC219762]) using MegaTran 2.0 (Cat# [TT210002]).