

Product datasheet for PH319734

GnRH (GNRH1) (NM_001083111) Human Mass Spec Standard

Product data:

Product Type:	Mass Spec Standards
Description:	GNRH1 MS Standard C13 and N15-labeled recombinant protein (NP_001076580)
Species:	Human
Expression Host:	HEK293
Expression cDNA Clone or AA Sequence:	RC219734
Predicted MW:	10.4 kDa
Protein Sequence:	>RC219734 protein sequence Red=Cloning site Green=Tags(s) MKPIQKLLAGLILLTWCVEGCSSQHWSYGLRPGGKRDAENLIDSFQEIVKEVGQLAETQRFECTTHQPRS PLRDLKGALESLEEETGQKKI TRTRPLEQKLISEEDLAANDILDYKDDDDKV
Tag:	C-Myc/DDK
Purity:	> 80% as determined by SDS-PAGE and Coomassie blue staining
Concentration:	>0.05 µg/µL as determined by microplate BCA method
Labeling Method:	Labeled with [U- 13C6, 15N4]-L-Arginine and [U- 13C6, 15N2]-L-Lysine
Buffer:	25 mM Tris-HCl, 100 mM glycine, pH 7.3
Storage:	Store at -80°C. Avoid repeated freeze-thaw cycles.
Stability:	Stable for 3 months from receipt of products under proper storage and handling conditions.
RefSeq:	NP_001076580
RefSeq Size:	1297
RefSeq ORF:	276
Synonyms:	GNRH; GRH; LHRH; LNRH
Locus ID:	2796
UniProt ID:	P01148
Cytogenetics:	8p21.2



[View online »](#)

Summary:

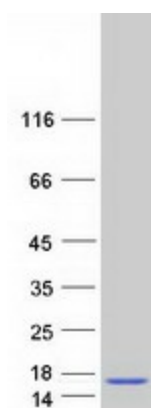
This gene encodes a preproprotein that is proteolytically processed to generate a peptide that is a member of the gonadotropin-releasing hormone (GnRH) family of peptides. Alternative splicing results in multiple transcript variants, at least one of which is secreted and then cleaved to generate gonadoliberin-1 and GnRH-associated peptide 1. Gonadoliberin-1 stimulates the release of luteinizing and follicle stimulating hormones, which are important for reproduction. Mutations in this gene are associated with hypogonadotropic hypogonadism. [provided by RefSeq, Nov 2015]

Protein Families:

Druggable Genome, Secreted Protein

Protein Pathways:

GnRH signaling pathway

Product images:

Coomassie blue staining of purified GNRH1 protein (Cat# [TP319734]). The protein was produced from HEK293T cells transfected with GNRH1 cDNA clone (Cat# [RC219734]) using MegaTran 2.0 (Cat# [TT210002]).