

## Product datasheet for PH319713

### KCTD1 (NM\_198991) Human Mass Spec Standard

#### Product data:

Product Type:	Mass Spec Standards
Description:	KCTD1 MS Standard C13 and N15-labeled recombinant protein (NP_945342)
Species:	Human
Expression Host:	HEK293
Expression cDNA Clone or AA Sequence:	RC219713
Predicted MW:	29.4 kDa
Protein Sequence:	>RC219713 protein sequence Red=Cloning site Green=Tags(s)  MSRPLITRSPASPLNNQGIPTPAQLTKSNAPVHIDVGGHMYTSSLATLTKYPESRIGRLFDGTEPIVLDS LKQHYFIDRDGQMFRYILNFLRTSKLLIPDDFKDYTLLEYEAKYFQLQPMLLEMERWKQDRETGRFSRPC ECLVVRVAPDLGERITLSGDKSLIEEVFPEIGDVMCNSVNAGWNHDSHTVIRFPLNGYCHLNSVQVLERL QQRGFEIVGSCGGVDSSQFSEYVLRRELRRTPRVPSVIRIKQEPLD  TRTRPLEQKLI SEEDLAANDILDYKDDDDKV
Tag:	C-Myc/DDK
Purity:	> 80% as determined by SDS-PAGE and Coomassie blue staining
Concentration:	50 ug/ml as determined by BCA
Labeling Method:	Labeled with [U- <sup>13</sup> C <sub>6</sub> , <sup>15</sup> N <sub>4</sub> ]-L-Arginine and [U- <sup>13</sup> C <sub>6</sub> , <sup>15</sup> N <sub>2</sub> ]-L-Lysine
Buffer:	100 mM glycine, 25 mM Tris-HCl, pH 7.3. Store at -80°C. Avoid repeated freeze-thaw cycles. Stable for 3 months from receipt of products under proper storage and handling conditions.
RefSeq:	<u>NP_945342</u>
RefSeq Size:	1754
RefSeq ORF:	771
Synonyms:	C18orf5
Locus ID:	284252
Cytogenetics:	18q11.2



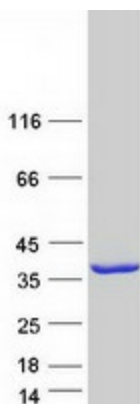
[View online »](#)

**Summary:**

This gene encodes a protein containing a BTB (Broad-complex, tramtrack and bric a brac), also known as a POZ (POxvirus and zinc finger) protein-protein interaction domain. The encoded protein negatively regulates the AP-2 family of transcription factors and the Wnt signaling pathway. A mechanism for the modulation of Wnt signaling has been proposed in which the encoded protein enhances ubiquitination and degradation of the beta-catenin protein. Mutations in this gene have been identified in Scalp-ear-nipple (SEN) syndrome. [provided by RefSeq, May 2017]

**Protein Families:**

Ion Channels: Other

**Product images:**

Coomassie blue staining of purified KCTD1 protein (Cat# [TP319713]). The protein was produced from HEK293T cells transfected with KCTD1 cDNA clone (Cat# [RC219713]) using MegaTran 2.0 (Cat# [TT210002]).