

## Product datasheet for PH319692

### TPD52L2 (NM\_199359) Human Mass Spec Standard

#### Product data:

Product Type:	Mass Spec Standards
Description:	TPD52L2 MS Standard C13 and N15-labeled recombinant protein (NP_955391)
Species:	Human
Expression Host:	HEK293
Expression cDNA Clone or AA Sequence:	RC219692
Predicted MW:	19.7 kDa
Protein Sequence:	>RC219692 representing NM_199359 Red=Cloning site Green=Tags(s)  MDSAGQDINLNSPNKGLLSDSMTDVPVDTGVAARTPAVEGLTEAEEEEELRAELTKVEEIVTLRQVLA ERHCGELKRRLGLSTLGELKQNLRSWHDVQVSSAYKKTQETLSQAGQKTSAAALSTVGS AISRKLGD MRN SATFKSFEDRVGTIKSKVVDRENGSDNLPSSAGSGDKPLSDPAPF  TRTRPLEQKLI SEEDLAANDILDYKDDDDKV
Tag:	C-Myc/DDK
Purity:	> 80% as determined by SDS-PAGE and Coomassie blue staining
Concentration:	>0.05 µg/µL as determined by microplate BCA method
Labeling Method:	Labeled with [U- <sup>13</sup> C <sub>6</sub> , <sup>15</sup> N <sub>4</sub> ]-L-Arginine and [U- <sup>13</sup> C <sub>6</sub> , <sup>15</sup> N <sub>2</sub> ]-L-Lysine
Buffer:	25 mM Tris-HCl, 100 mM glycine, pH 7.3
Storage:	Store at -80°C. Avoid repeated freeze-thaw cycles.
Stability:	Stable for 3 months from receipt of products under proper storage and handling conditions.
RefSeq:	<a href="#">NP_955391</a>
RefSeq Size:	2297
RefSeq ORF:	559
Synonyms:	D54; TPD54
Locus ID:	7165
UniProt ID:	<a href="#">Q68E05</a>

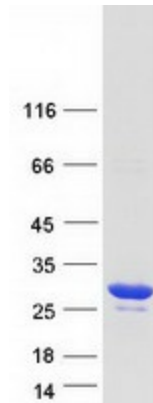


[View online »](#)

**Cytogenetics:** 20q13.33

**Summary:** This gene encodes a member of the tumor protein D52-like family. These proteins are characterized by an N-terminal coiled-coil motif that is used to form homo- and heteromeric complexes with other tumor protein D52-like proteins. Expression of this gene may be a marker for breast cancer and acute lymphoblastic leukemia. Alternatively spliced transcript variants encoding multiple isoforms have been observed for this gene, and a pseudogene of this gene is located on the long arm of chromosome 12. [provided by RefSeq, Aug 2011]

**Product images:**



Coomassie blue staining of purified TPD52L2 protein (Cat# [TP319692]). The protein was produced from HEK293T cells transfected with TPD52L2 cDNA clone (Cat# [RC219692]) using MegaTran 2.0 (Cat# [TT210002]).