

## Product datasheet for PH319689

### Galectin 10 (CLC) (NM\_001828) Human Mass Spec Standard

#### Product data:

Product Type:	Mass Spec Standards
Description:	CLC MS Standard C13 and N15-labeled recombinant protein (NP_001819)
Species:	Human
Expression Host:	HEK293
Expression cDNA Clone or AA Sequence:	RC219689
Predicted MW:	16.3 kDa
Protein Sequence:	>RC219689 representing NM_001828 Red=Cloning site Green=Tags(s)  MSLLPVPYTEAASLSTGSTVTIKGRPLVCFLNEPYLQVDFHTEMKEESDIVHFQVCFGRRVMMNSREYGAWKQQVESKNMPFQDGGQEFELISVLPDKYQVMVNGQSSYTFDHRKPEAVKMQVWRDISLTKFNVSYLKR  TRTRPLEQKLISEEDLAANDILDYKDDDDKV
Tag:	C-Myc/DDK
Purity:	> 80% as determined by SDS-PAGE and Coomassie blue staining
Concentration:	>0.05 µg/µL as determined by microplate BCA method
Labeling Method:	Labeled with [U- <sup>13</sup> C <sub>6</sub> , <sup>15</sup> N <sub>4</sub> ]-L-Arginine and [U- <sup>13</sup> C <sub>6</sub> , <sup>15</sup> N <sub>2</sub> ]-L-Lysine
Buffer:	25 mM Tris-HCl, 100 mM glycine, pH 7.3
Storage:	Store at -80°C. Avoid repeated freeze-thaw cycles.
Stability:	Stable for 3 months from receipt of products under proper storage and handling conditions.
RefSeq:	<u><a href="#">NP_001819</a></u>
RefSeq Size:	641
RefSeq ORF:	426
Synonyms:	Gal-10; GAL10; LGALS10; LGALS10A; LPPL_HUMAN
Locus ID:	1178
UniProt ID:	<u><a href="#">Q05315</a></u>



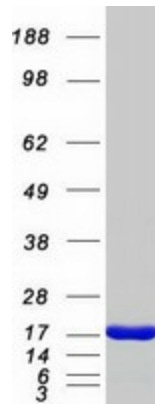
[View online »](#)

**Cytogenetics:** 19q13.2

**Summary:** Lysophospholipases are enzymes that act on biological membranes to regulate the multifunctional lysophospholipids. The protein encoded by this gene is a lysophospholipase expressed in eosinophils and basophils. It hydrolyzes lysophosphatidylcholine to glycerophosphocholine and a free fatty acid. This protein may possess carbohydrate or IgE-binding activities. It is both structurally and functionally related to the galectin family of beta-galactoside binding proteins. It may be associated with inflammation and some myeloid leukemias. [provided by RefSeq, Jul 2008]

**Protein Families:** Secreted Protein

### Product images:



Coomassie blue staining of purified CLC protein (Cat# [TP319689]). The protein was produced from HEK293T cells transfected with CLC cDNA clone (Cat# [RC219689]) using MegaTran 2.0 (Cat# [TT210002]).