

Product datasheet for PH319661

Junctophilin 2 (JPH2) (NM_020433) Human Mass Spec Standard

Product data:

Product Type:	Mass Spec Standards
Description:	JPH2 MS Standard C13 and N15-labeled recombinant protein (NP_065166)
Species:	Human
Expression Host:	HEK293
Expression cDNA Clone or AA Sequence:	RC219661
Predicted MW:	74 kDa
Protein Sequence:	>RC219661 representing NM_020433 Red=Cloning site Green=Tags(s)

MSGGRFDFFDDGGAYCGGWEGGKAHGHLCTGPKGQGEYSGSWNFGFEVAGVYTWPSGNTFEGYWSQGKRH
GLGIETKGRWLYKGEWTHGFKGRYGRIRQSSSSGAKYEGTWNNGLQDGYGTETYADGGTYQGQFTNGMRHG
YGVRQSVPYGMVVRSPLRTSLSSLRSEHSNGTVAPDSPASPDGPALPSPAIPRGGFALSLLANAEA
AARAPKGGGLFQRGALLGKLRAESRTSVGSQRSRVSLKSDLSSGASDAASTASLGAAEAGADEAAPFE
ADIDATTTETYMGEWKNDKRSFGVSRSSGLRYEGEWDNLRHGYGCTTLPDGHREEGKYRHNVLVKDT
KRRMLQLKSNKVRQKVEHSVEGAQRAAAIARQKAEIAASRTSHAKAKAEAAEQAALANQESNIARTLAR
ELAPDFYQPGPEYQKRRLLQEILENSESLLLEPPDRGAGAAGLPQPPRESPQLHEREPTRPEGGSPSPAGT
PPQPKRPRPGVSKDGLLSPGAWNGEPSGEGSRSVTPSEGAGRSPARPATERMAIEALQAPPAPSREPEV
ALYQGYHSYAVRTTPPEPPPFEDQPEPEVSGSESAPSSPATAPLQAPTLRGPEPARETPAKLEPKPIIPK
AEPRAKARKTEARGLTKAGAKKKARKEAALAAEAEVEVEEVPNTILICMVILLNIGLAILFVHLLT

TRTRPLEQKLISEEDLAANDILDYKDDDDKV

Tag:	C-Myc/DDK
Purity:	> 80% as determined by SDS-PAGE and Coomassie blue staining
Concentration:	>0.05 µg/µL as determined by microplate BCA method
Labeling Method:	Labeled with [U- 13C6, 15N4]-L-Arginine and [U- 13C6, 15N2]-L-Lysine
Buffer:	25 mM Tris-HCl, 100 mM glycine, pH 7.3
Storage:	Store at -80°C. Avoid repeated freeze-thaw cycles.
Stability:	Stable for 3 months from receipt of products under proper storage and handling conditions.
RefSeq:	NP_065166
RefSeq Size:	4802



[View online »](#)

RefSeq ORF: 2088

Synonyms: CMH17; JP-2; JP2

Locus ID: 57158

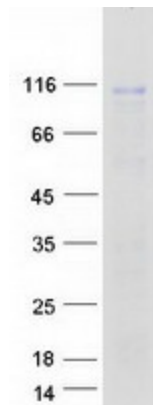
UniProt ID: [Q9BR39](#), [Q86VZ3](#)

Cytogenetics: 20q13.12

Summary: Junctional complexes between the plasma membrane and endoplasmic/sarcoplasmic reticulum are a common feature of all excitable cell types and mediate cross talk between cell surface and intracellular ion channels. The protein encoded by this gene is a component of junctional complexes and is composed of a C-terminal hydrophobic segment spanning the endoplasmic/sarcoplasmic reticulum membrane and a remaining cytoplasmic domain that shows specific affinity for the plasma membrane. This gene is a member of the junctophilin gene family. Alternative splicing has been observed at this locus and two variants encoding distinct isoforms are described. [provided by RefSeq, Jul 2008]

Protein Families: Transmembrane

Product images:



Coomassie blue staining of purified JPH2 protein (Cat# [TP319661]). The protein was produced from HEK293T cells transfected with JPH2 cDNA clone (Cat# [RC219661]) using MegaTran 2.0 (Cat# [TT210002]).