

## Product datasheet for PH319649

### SAP155 (SF3B1) (NM\_001005526) Human Mass Spec Standard

#### Product data:

Product Type:	Mass Spec Standards
Description:	SF3B1 MS Standard C13 and N15-labeled recombinant protein (NP_001005526)
Species:	Human
Expression Host:	HEK293
Expression cDNA Clone or AA Sequence:	RC219649
Predicted MW:	15.8 kDa
Protein Sequence:	>RC219649 representing NM_001005526 <b>Red</b> =Cloning site <b>Green</b> =Tags(s)  MAKIAKTHEDIEAQIREIQGKKAALDEAQVGLDSTGYDQEIYGGSDSRFAGYVTSIAATELEDDDDY SSSTSLLGQKPGYHAPVALLNDIPQSTEQYDPFAEHRPPKIIDREDEYKHKHRTMIISPERLDPFADGF YSAA  <b>TR</b> TRPLEQKLISEEDLAANDILDYKDDDDKV
Tag:	C-Myc/DDK
Purity:	> 80% as determined by SDS-PAGE and Coomassie blue staining
Concentration:	>0.05 µg/µL as determined by microplate BCA method
Labeling Method:	Labeled with [U- <sup>13</sup> C <sub>6</sub> , <sup>15</sup> N <sub>4</sub> ]-L-Arginine and [U- <sup>13</sup> C <sub>6</sub> , <sup>15</sup> N <sub>2</sub> ]-L-Lysine
Buffer:	25 mM Tris-HCl, 100 mM glycine, pH 7.3
Storage:	Store at -80°C. Avoid repeated freeze-thaw cycles.
Stability:	Stable for 3 months from receipt of products under proper storage and handling conditions.
RefSeq:	<a href="#">NP_001005526</a>
RefSeq Size:	647
RefSeq ORF:	432
Synonyms:	Hsh155; MDS; PRP10; PRPF10; SAP155; SF3b155
Locus ID:	23451
UniProt ID:	<a href="#">B4DGZ4</a>



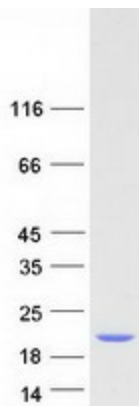
[View online »](#)

**Cytogenetics:** 2q33.1

**Summary:** This gene encodes subunit 1 of the splicing factor 3b protein complex. Splicing factor 3b, together with splicing factor 3a and a 12S RNA unit, forms the U2 small nuclear ribonucleoproteins complex (U2 snRNP). The splicing factor 3b/3a complex binds pre-mRNA upstream of the intron's branch site in a sequence independent manner and may anchor the U2 snRNP to the pre-mRNA. Splicing factor 3b is also a component of the minor U12-type spliceosome. The carboxy-terminal two-thirds of subunit 1 have 22 non-identical, tandem HEAT repeats that form rod-like, helical structures. Alternative splicing results in multiple transcript variants encoding different isoforms. [provided by RefSeq, Jul 2008]

**Protein Pathways:** Spliceosome

### Product images:



Coomassie blue staining of purified SF3B1 protein (Cat# [TP319649]). The protein was produced from HEK293T cells transfected with SF3B1 cDNA clone (Cat# [RC219649]) using MegaTran 2.0 (Cat# [TT210002]).