

Product datasheet for PH319612

INPP4B (NM_001101669) Human Mass Spec Standard

Product data:

Product Type:	Mass Spec Standards
Description:	INPP4B MS Standard C13 and N15-labeled recombinant protein (NP_001095139)
Species:	Human
Expression Host:	HEK293
Expression cDNA Clone or AA Sequence:	RC219612
Predicted MW:	104.6 kDa
Protein Sequence:	>RC219612 representing NM_001101669 Red=Cloning site Green=Tags(s)

MEIKEEGASEEGQHFLPTAQANDPGDCQFTSIQKTPNEPQLEFILACKDLVAPVRDRKLNLTLVQISVIHP
VEQSLTRYSSSTEIVEGTRDPLFLTGVTFPSEYP.IYEETKIKLTVYDVKDKSHDTVRTSVLPEHKDPPPEV
GRSFLGYASFVKV GELLKSKEQLLVL SLRTSDGGKVVGTIEVSVVKMGEIEDGEADHITTDVQGQKCALVC
ECTAPESVSGKDNLPFLNSVLKNPVCKLYRFTSDNKWMIREQMSEILSFHIPKELISLHIKEDLCRN
QEIKELGELSPHWDNLRKNVLTHCDQMVNMYQDILTELSKETGSSFKSSSSKGEKTELFVPIINHLQRMQ
VHSPHLKDALYD VITVGAPAAHFQGFKNGLRKL LHRFETERRNTGYQF IYYSPENTAKAKEVLSNINQL
QPLIATHADLLLNSASQHS PDSLKNSL KMLSEKTELFVHAFKQDLVRSALLALYARPGGILKPPSPKS
STEESSPDQPPVMRGQDSIPHHS DYDEEEWDRVWVAVGKSLNCI IAMVDKLI ERDGGSEGSGGNN DGEK
EPSLTD AIPSHPRE DWYEQLYPLIL TLKDCMGEVVNRAKQSLTFVLLQELAYSLPQCLMLTLRRDIVFSQ
ALAGLVCGFI IKLQTSLYDPGFLQQLHTVGLIVQYEGLLSTYSDEIGMLEDMAVGISDLKKVAFKIEAK
SNDVLPVITGRREHYVVEVKLPARMFESLPLQIKEGQLLHVYPVLFNVGINEQQT LAERFGDVS LQESIN
QENFELLQEYKIFMEKMPDYISHFQE QNDLKALLENLLQNIQSKKRKNVEIMWLAATICRKLNGIRFT
CCKSAKDRTSMSVTLEQCSILRDEHQLHKDF FIRALDCMRREGCRIENVLKNIKCRKYAFNMLQLMAFPK
YYRPPEGTYGKADT

TRTRPLEQKLI SEEDLAANDILDYKDDDDKV

Tag:	C-Myc/DDK
Purity:	> 80% as determined by SDS-PAGE and Coomassie blue staining
Concentration:	>0.05 µg/µL as determined by microplate BCA method
Labeling Method:	Labeled with [U- ¹³ C ₆ , ¹⁵ N ₄]-L-Arginine and [U- ¹³ C ₆ , ¹⁵ N ₂]-L-Lysine
Buffer:	25 mM Tris-HCl, 100 mM glycine, pH 7.3
Storage:	Store at -80°C. Avoid repeated freeze-thaw cycles.
Stability:	Stable for 3 months from receipt of products under proper storage and handling conditions.



[View online >](#)

RefSeq: [NP_001095139](#)

RefSeq Size: 4041

RefSeq ORF: 2772

Locus ID: 8821

UniProt ID: [O15327](#)

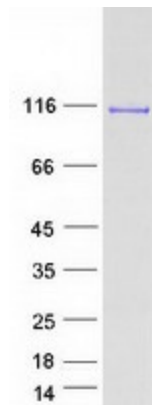
Cytogenetics: 4q31.21

Summary: INPP4B encodes the inositol polyphosphate 4-phosphatase type II, one of the enzymes involved in phosphatidylinositol signaling pathways. This enzyme removes the phosphate group at position 4 of the inositol ring from inositol 3,4-bisphosphate. There is limited data to suggest that the human type II enzyme is subject to alternative splicing, as has been established for the type I enzyme. [provided by RefSeq, Jul 2008]

Protein Families: Druggable Genome

Protein Pathways: Inositol phosphate metabolism, Metabolic pathways, Phosphatidylinositol signaling system

Product images:



Coomassie blue staining of purified INPP4B protein (Cat# [TP319612]). The protein was produced from HEK293T cells transfected with INPP4B cDNA clone (Cat# [RC219612]) using MegaTran 2.0 (Cat# [TT210002]).