

Product datasheet for PH319601

IL6R (NM_181359) Human Mass Spec Standard

Product data:

Product Type:	Mass Spec Standards
Description:	IL6R MS Standard C13 and N15-labeled recombinant protein (NP_852004)
Species:	Human
Expression Host:	HEK293
Expression cDNA Clone or AA Sequence:	RC219601
Predicted MW:	40.2 kDa
Protein Sequence:	>RC219601 protein sequence Red=Cloning site Green=Tags(s)
	MLAVGCALLAALLAAPGAALAPRRCPAQEVARGVLTSLPGDSVTLTCPGVEPEDNATVHVLRKPAAGSH PSRWAGMGRRLLRVQLHDSGNYSCYRAGRPAGTVHLLVDVPPEEPQLSCFRKSPLSNVCEWGRSTP SLTTKAVLLVRKFNQSPAEDFQEPQYSQESQKFSQQLAVPEGDSSFYIVSMCVASSVGSKFSKTQTFQG CGILQDPANITVTAVARNPRWLSVTWQDPHSWNSFYRLRFELRYAERSKFTTTMVKDLQHHCVIH DAWSGLRHVVQLRAQEEFGQGEWSEWSPEAMGTPWTESRSPPAENEVSTPMQALTTNKDDDNILFRDSAN ATSLPGSRRRGSCGL
	TRTRPLEQKLI SEEDLAANDILDYKDDDDKV
Tag:	C-Myc/DDK
Purity:	> 80% as determined by SDS-PAGE and Coomassie blue staining
Concentration:	>0.05 µg/µL as determined by microplate BCA method
Labeling Method:	Labeled with [U- ¹³ C ₆ , ¹⁵ N ₄]-L-Arginine and [U- ¹³ C ₆ , ¹⁵ N ₂]-L-Lysine
Buffer:	25 mM Tris-HCl, 100 mM glycine, pH 7.3
Storage:	Store at -80°C. Avoid repeated freeze-thaw cycles.
Stability:	Stable for 3 months from receipt of products under proper storage and handling conditions.
RefSeq:	NP_852004
RefSeq Size:	5834
RefSeq ORF:	1095
Synonyms:	CD126; gp80; HIES5; IL-1Ra; IL-6R; IL-6R-1; IL-6RA; IL6Q; IL6QTL; IL6RA; IL6RQ
Locus ID:	3570



[View online »](#)

UniProt ID: [P08887](#)

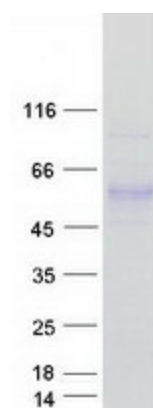
Cytogenetics: 1q21.3

Summary: This gene encodes a subunit of the interleukin 6 (IL6) receptor complex. Interleukin 6 is a potent pleiotropic cytokine that regulates cell growth and differentiation and plays an important role in the immune response. The IL6 receptor is a protein complex consisting of this protein and interleukin 6 signal transducer (IL6ST/GP130/IL6-beta), a receptor subunit also shared by many other cytokines. Dysregulated production of IL6 and this receptor are implicated in the pathogenesis of many diseases, such as multiple myeloma, autoimmune diseases and prostate cancer. Alternatively spliced transcript variants encoding distinct isoforms have been identified in this gene. A pseudogene of this gene is found on chromosome 9. [provided by RefSeq, Aug 2020]

Protein Families: Druggable Genome, ES Cell Differentiation/IPS, Transmembrane

Protein Pathways: Cytokine-cytokine receptor interaction, Hematopoietic cell lineage, Jak-STAT signaling pathway

Product images:



Coomassie blue staining of purified IL6R protein (Cat# [TP319601]). The protein was produced from HEK293T cells transfected with IL6R cDNA clone (Cat# [RC219601]) using MegaTran 2.0 (Cat# [TT210002]).