

## Product datasheet for PH319582

### NAALAD2 (NM\_005467) Human Mass Spec Standard

#### Product data:

Product Type:	Mass Spec Standards
Description:	NAALAD2 MS Standard C13 and N15-labeled recombinant protein (NP_005458)
Species:	Human
Expression Host:	HEK293
Expression cDNA Clone or AA Sequence:	RC219582
Predicted MW:	83.6 kDa
Protein Sequence:	>RC219582 protein sequence Red=Cloning site Green=Tags(s)

MAESRGRLYLWMCLAAALASFLMGFMVGFVIFKPLKETTTSVRYHQSIKRWKLVSEMKAEIKSFLRSFTKL  
PHLAGTEQNFLAKKIQTQWKFGLDLAKLIHYDVLLSYNETNANYISIVDEHETEIFKTSYLEPPPDG  
YENVNTIVPPYNAFSAQGMPEGDLVYVNYARTEDFFKLEREMGINCTGKIVVIARYGKIFRGNKVKNA  
GAIGIILYSDPADYFAPEVQPYKGNLPGTAAQRGNVNLNAGADPLTPGYPAKEYTFRLDVEEGVGP  
RIPVHPIGYNDAEILLRVLGGIAPPDKSWKGNLNVSYISIGPGFTGSDSFRKVRMHVYNINKITRIYVVG  
TIRGSVEPDRYVILGGHRDSWVFGAIDPTSGVAVLQEIARSFGKLSKGRWRPRRTIIFASWDAEEFGLL  
STEWAEENVKILQERSIAYINSDSSIEGNYTLRVDCTPLLYQLVYKLTKEIPSPDDGFESKSLYESWLEK  
DPSPENKLNPRINKLGSQDFEAYFQRLGIASGRARYTKNKKTKDYSSYPVYHTIYETFELVEKFDPTF  
KKQLSVAQLRGALVYELVDSKIIPFNIQDYAEALKNYAASIYNLSKKHDQQLTDHGVSFDSLFSVKNFS  
EAASDFHKRLIQVDLNNPIAVRMMNDQLMLLERAFFIDPLGLPGKLFYRHIIFAPSSHNYAGESFPFIYD  
AIFDIENKANSRLAWKEVKKHISIAAFTIQAAAGTLKEVL

TRTRPLEQKLISEEDLAANDILDYKDDDDKV

Tag:	C-Myc/DDK
Purity:	> 80% as determined by SDS-PAGE and Coomassie blue staining
Concentration:	>0.05 µg/µL as determined by microplate BCA method
Labeling Method:	Labeled with [U- <sup>13</sup> C <sub>6</sub> , <sup>15</sup> N <sub>4</sub> ]-L-Arginine and [U- <sup>13</sup> C <sub>6</sub> , <sup>15</sup> N <sub>2</sub> ]-L-Lysine
Buffer:	25 mM Tris-HCl, 100 mM glycine, pH 7.3
Storage:	Store at -80°C. Avoid repeated freeze-thaw cycles.
Stability:	Stable for 3 months from receipt of products under proper storage and handling conditions.
RefSeq:	<a href="#">NP_005458</a>



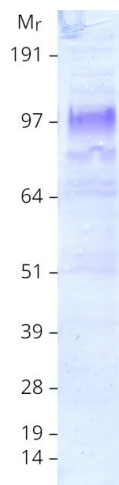
[View online »](#)

RefSeq Size:	3196
RefSeq ORF:	2220
Synonyms:	GPCIII; GPCIII; NAADALASE2; NAALADASE2
Locus ID:	10003
UniProt ID:	<a href="#">Q9Y3Q0</a>
Cytogenetics:	11q14.3

**Summary:** This gene is a member of the N-acetylated alpha-linked acidic dipeptidase (NAALADase) gene family. The representative member of this family is the gene encoding human prostate-specific membrane antigen (PSM), which is a marker of prostatic carcinomas and is the first to be shown to possess NAALADase activity. NAALADase cleaves N-acetyl-L-aspartate-L-glutamate (NAAG), which is a neuropeptide expressed both in the central nervous systems and in the periphery and is thought to function as a neurotransmitter. The product of this gene is a type II integral membrane protein. Transient transfection of this gene confers both NAALADase and dipetidyl peptidase IV activities to mammalian cells. This gene is highly expressed in ovary and testis as well as within discrete brain areas. Two transcript variants encoding different isoforms have been found for this gene. [provided by RefSeq, Jul 2014]

**Protein Families:** Druggable Genome, Transmembrane

### Product images:



Coomassie blue staining of purified NAALAD2 protein (Cat# [TP319582]). The protein was produced from HEK293T cells transfected with NAALAD2 cDNA clone (Cat# [RC219582]) using MegaTran 2.0 (Cat# [TT210002]).